

Part number:

009-10168a

**HYDROMA**

HYDRAULICKÉ SYSTÉMY

**HIDROMA**  
SYSTEMS

UKŁADY HYDRAULICZNE

**HYDROMA**

ГИДРАВЛИЧЕСКИЕ СИСТЕМЫ

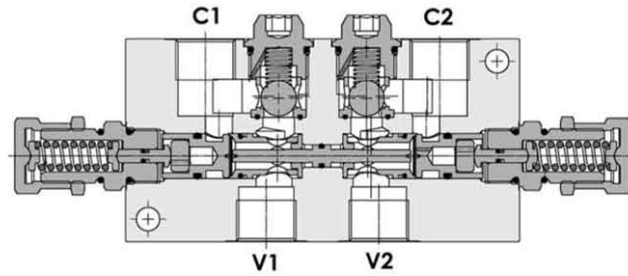
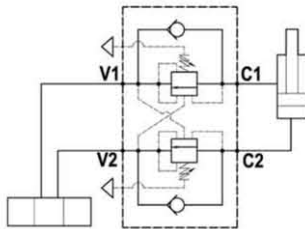
Tipo / Type

**FPOEB 120 D-3/4-L-A-\*\*-\***

Sez / Section

**P**

Valvola overcenter doppia bilanciata, montaggio in linea, serie E  
Fully balanced dual overcenter valve, line mounted, E series



#### SPECIFICHE TECNICHE

**Materiali:** corpo in alluminio. I componenti interni sono in acciaio trattato termicamente.

**Portata max.:** 120 l/min

**Taratura max.:** 350 bar

**Rapporto di pilotaggio:** 3.2 : 1 (a richiesta 8.2 : 1)

**Regolazione pressione:** mediante vite

**Campo di regolazione pressione:** vedere pag.02

**Peso:** 1,770 Kg

#### TECHNICAL SPECIFICATIONS

**Materials:** body is in aluminium alloy. Internal parts are in hardened steel.

**Rated flow:** up to 120 l/min

**Max. setting:** 350 bar

**Pilot ratio:** 3.2 : 1 (standard), 8.2 : 1 on request

**Adjustment means:** leakproof screw adjustment

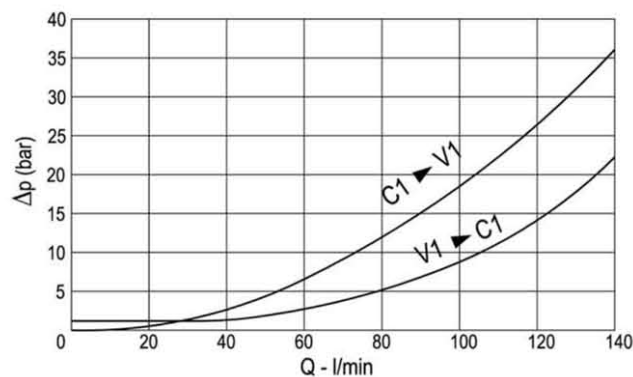
**Adjustable pressure range:** see page 02

**Weight:** 1,770 Kg

#### DIAGRAMMA PERDITE DI CARICO - PRESSURE DROP CURVES

Viscosità olio 24 mm<sup>2</sup>/sec. (3,5 °E)  
Temperatura 50 °C

Oil viscosity 24 mm<sup>2</sup>/sec. (3,5 °E)  
Temperature 50 °C



Part number:

**009-10168b**

**HYDROMA**

HYDRAULICKÉ SYSTÉMY

**HIDROMA  
SISTEMS**

UKŁADY HYDRAULICZNE

**HYDROMA**

ГИДРАВЛИЧЕСКИЕ СИСТЕМЫ

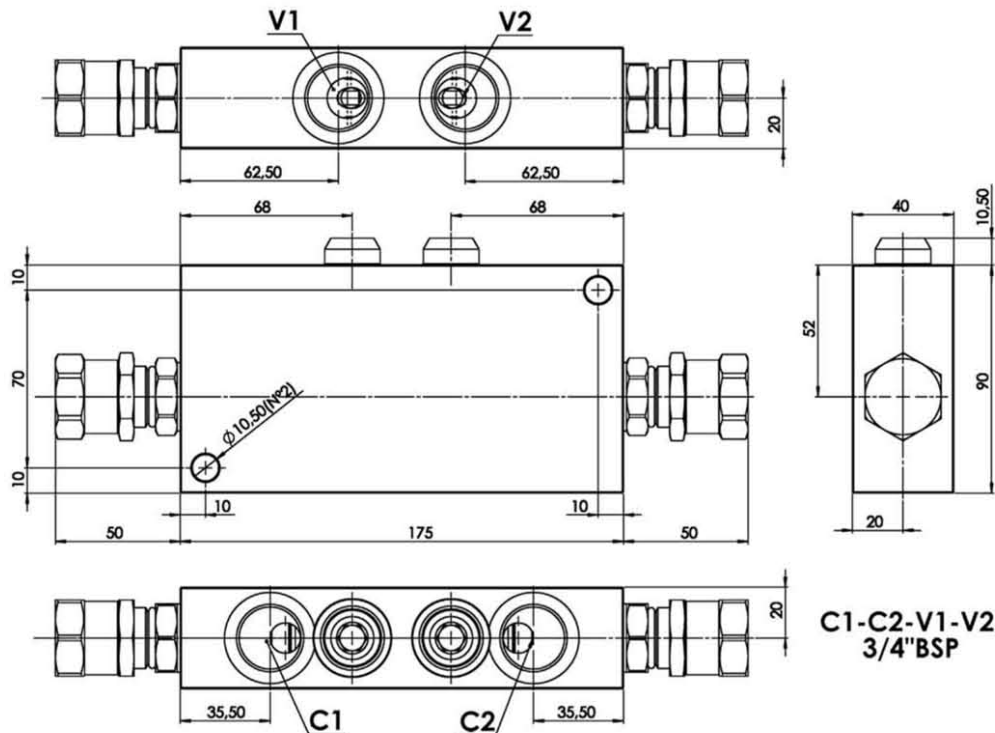
Tipo / Type

**FPOEB 120 D-3/4-L-A-\*-\***

Sez / Section

**P**

Valvola overcenter doppia bilanciata, montaggio in linea, serie E  
Fully balanced dual overcenter valve, line mounted, E series



**MOLLE - SPRINGS**

Codice Code *	Campo taratura min.-max. bar Adjustable pressure range bar	Incremento pressione bar/giro vite (r.pil.) Pressure increase bar/turn (pilot ratio)	Taratura std bar Std setting bar	Colore Colour
20	60 - 210	56 (3.2 : 1 - 8.2 : 1)	200	Verde - green
35	120 - 350	90 (3.2 : 1 - 8.2 : 1)	350	Rosso - Red

**ESEMPIO DI ORDINAZIONE - ORDERING CODE EXAMPLE**

FPOEB 120 D 3/4 L A 20 \*

