

Part number:

**HYDROMA**

HYDRAULICKÉ SYSTÉMY

**HIDROMA  
SISTEMS**

UKŁADY HYDRAULICZNE

**HYDROMA**

ГИДРАВЛИЧЕСКИЕ СИСТЕМЫ

## Hydraulic accumulator protection and cut-off unit BS

**WK  
491 820**
**NG 20****33 MPa**

04. 2003r.

### APPLICATION

Safety block is used to connect a hydraulic accumulator to a hydraulic circuit keeping safety rules.

### DESIGN DESCRIPTION

The unit consists of a housing incorporating the following sub-units:

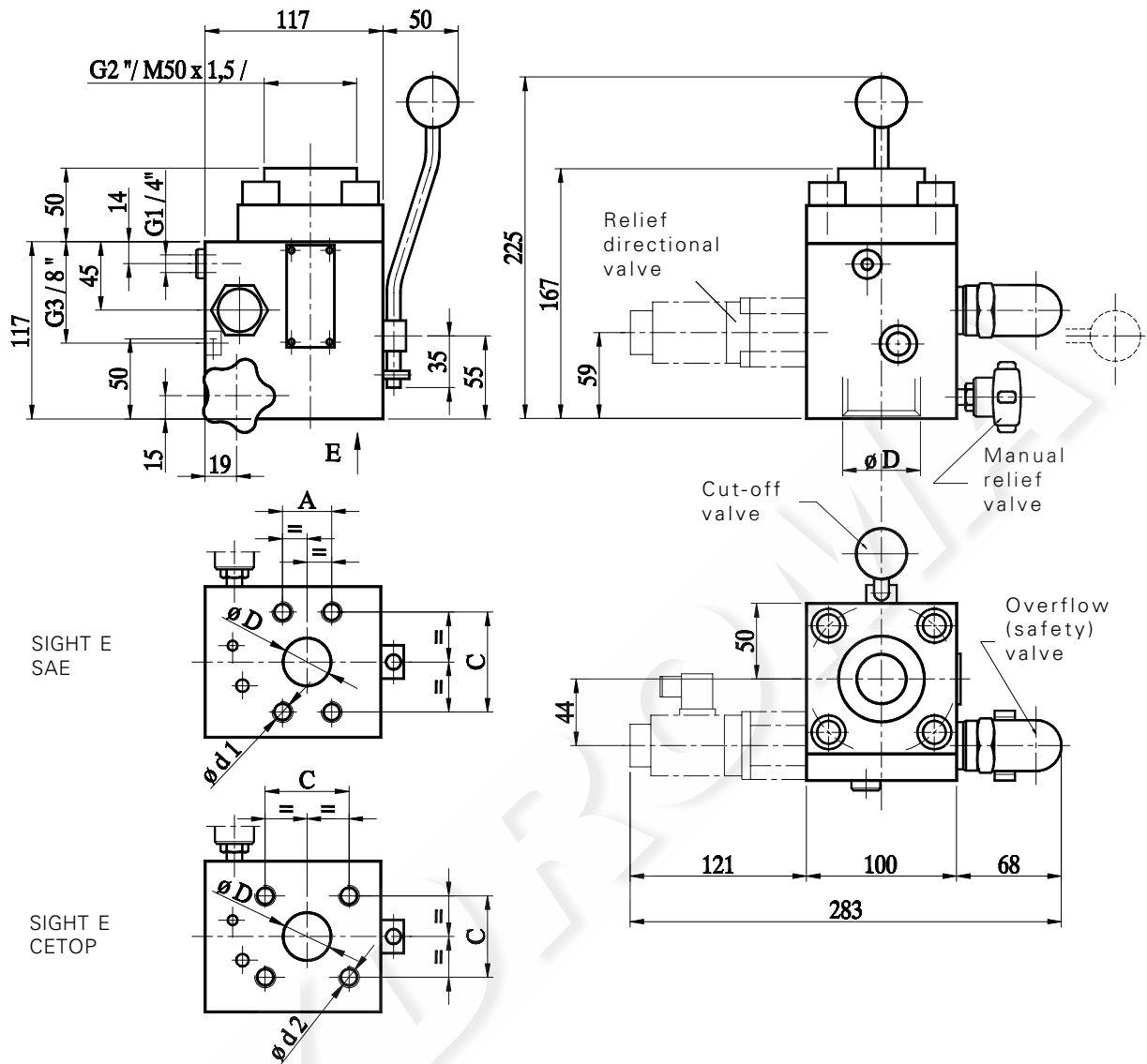
- ball cut-off valve for connecting and disconnecting the accumulator with the hydraulic system
- manual relief valve for safe unloading of accumulator after cut-off
- the valve can be with UDT or CE certificate or without any certificate. If the valve is ordered with the certificate, it is set at the pressure required and sealed.
- solenoid directional valve for electric control of accumulator unloading (in directional valve version)
- threaded flange for connecting the unit to the accumulator (standard flanges enable connecting an EPE accumulator)



### TECHNAICAL DATA

Rated dimensions	25 ; 32
Rated flow (at v=6 m/s)	BS25=180 dm <sup>3</sup> /min; BS32=290 dm <sup>3</sup> /min
Working fluid	Mineral oil
Optimum working temperature range	258 up to 343 K
Max working pressure	33 MPa
Housing construction material	steel
Overflow valve type	DBDS10K... wg WK 450 610
Required oil filtration	up to 16 μm
Solenoid directional valve type	2URED6C1-01/2M1... NZ4 wg WK 494 920
Directional control valve voltage	12VDC; 24V DC or 220V 50 Hz
Solenoid power rating	26W
Weight	12,3 up to 14,6 kg

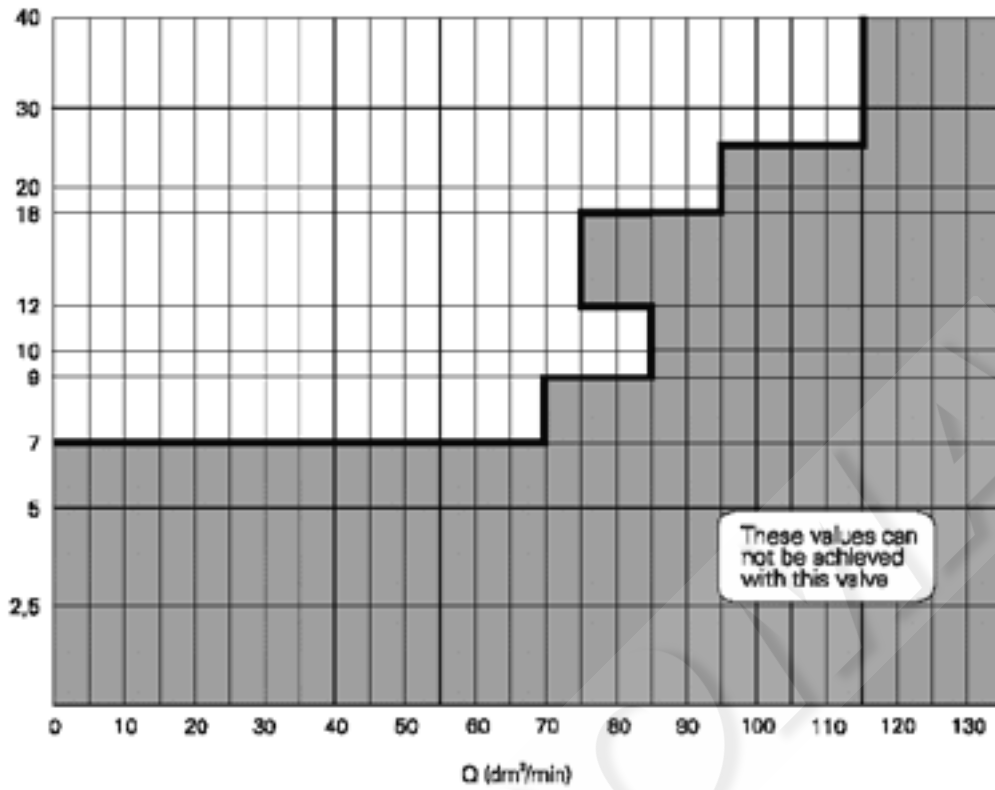
# OVERALL AND MOUNTING DIMENSIONS



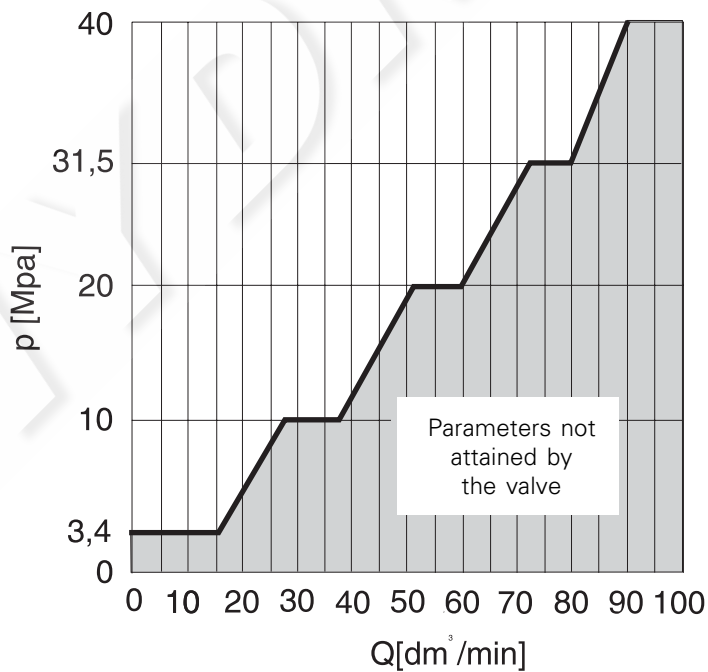
	$\phi D$	For flange connection SAE					For flange connection CEROP			
		Size	A	B	d1	Thread depth	Size	C	d2	Thread depth
BS 25	1"	1 1/4" SAE6000	31,6	66,7	M14	24	CETOP 38-400	51,6	M12	20
BS 32	1 1/2"	1 1/4" SAE6000	31,6	66,7	M14	24				
		1 1/2" SAE6000	36,7	79,4	M16	24				
		2" SAE3000	42,9	77,8	M12	20	CETOP 50-400	60,1	M14	24

# PERFORMANCE CURVES

DBDS10K... safety valve flow lines

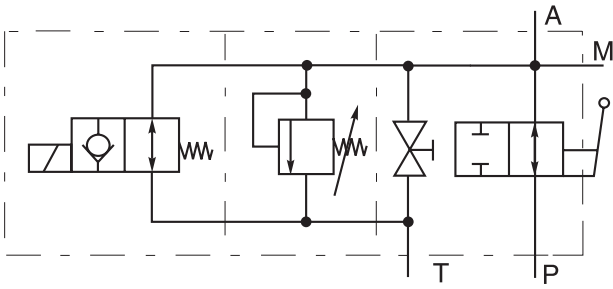


DBDS 10 version as a safety valve with CE approval



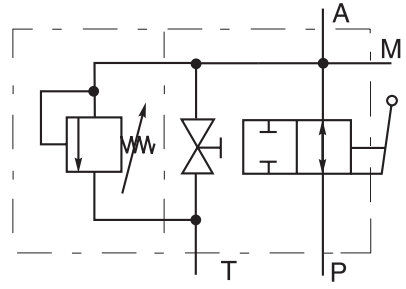
Version DBDS 10 as UDT - approved safety valve

SYMBOL



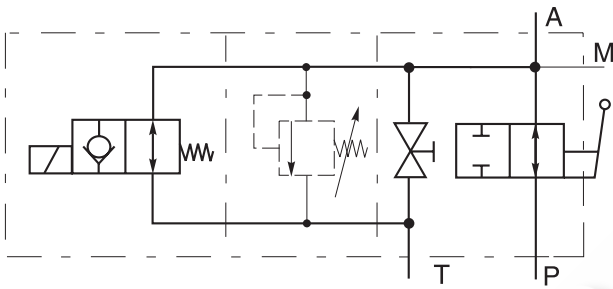
B  
BS25RD...  
E

B  
BS32RD...  
E



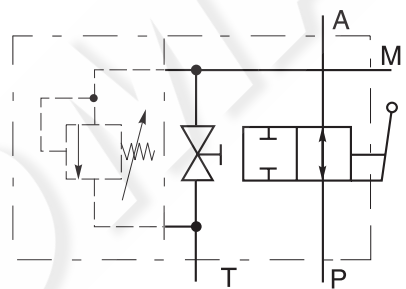
B  
BS25MD...  
E

B  
BS32MD...  
E



BS25RA...

BS32RA...



BS25MA...

BS32MA...

## HOW TO ORDER

Orders coded in the way showed below should be forwarded to the manufacturer.

BS	/									*
----	---	--	--	--	--	--	--	--	--	---

Unit size: 25 = 25 32 = 32										
Relief manner: Manual = M Manual and electric = R										
Electric directional valve control voltage (version R only) 12 VDC = G12 24 VDC = G24 220V 50Hz = W220R										
Overflow valve type: No valve = A With preset valve (no approval) = B With sealed valve (with CE approval) = C With sealed valve (UDT - approved) = E										
Safety valve setting up to 2,5 MPa = 25 up to 5 MPa = 50 up to 10 MPa = 100 up to 20 MPa = 200 up to 31,5 MPa = 315 up to 33 MPa = 330 For CE approval and UDT approved units, specify pressure setting (factory setting and sealing)										
Accumulator connections G2 connection = G M 50x1,5 connection = M										
Hydraulic system side connection dimensions port with inch screw thread (G1 for BS 25; G1 1 for BS 32) = R with SAE flange connection = S with CETOP flange connection = C										
SAE or CETOP connection: SAE 1 1/4 = A SAE 1 1/2 = B SAE 2 = C CETOP 38-400 = A CETOP 50-400 = B										
Sealing oilproof = P viton = V										
Housing construction material: phosphate steel = no designation stainless steel = X nickel steel = N										
Further requirements in clear text ( to be agreed upon with the manufacturer )										

CODING EXAMPLE:  
BS25MB100GRP