

Part number:

HYDROMA

HYDRAULICKÉ SYSTÉMY

**HIDROMA
SYSTEMS**

UKŁADY HYDRAULICZNE

HYDROMA

ГИДРАВЛИЧЕСКИЕ СИСТЕМЫ

Sectional valves specifically designed for applications

HC-D4L

Technical specifications

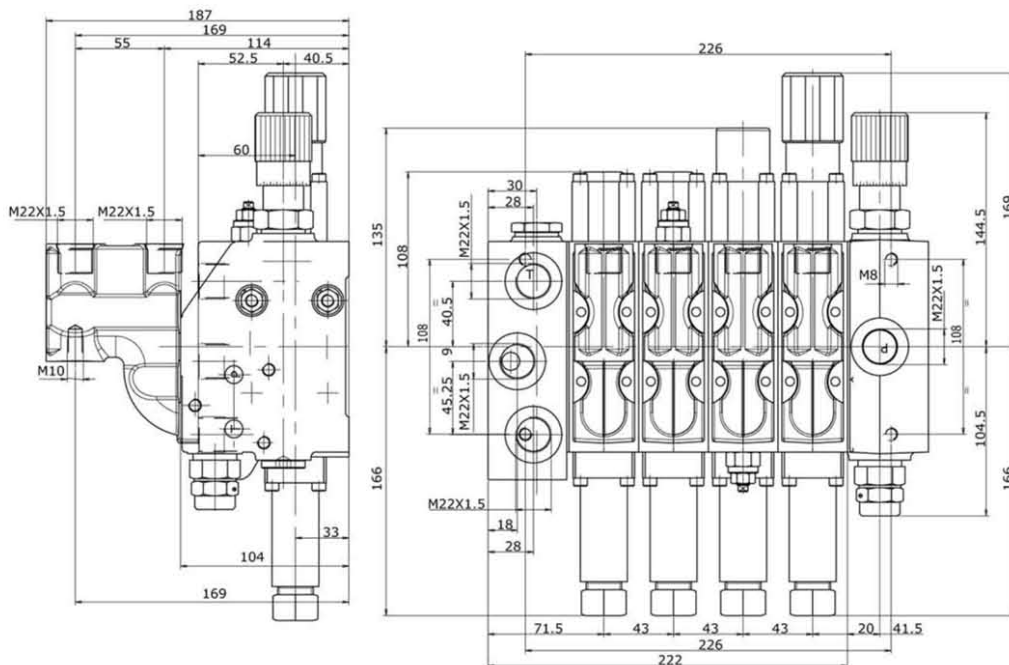
Working section number	1 - 12
Rated flow	80 l/min - 21 GPM
Rated pressure	350 bar - 5000 PSI
Spool stroke	6 + 6 mm
Spool pitch	43 mm

Applications

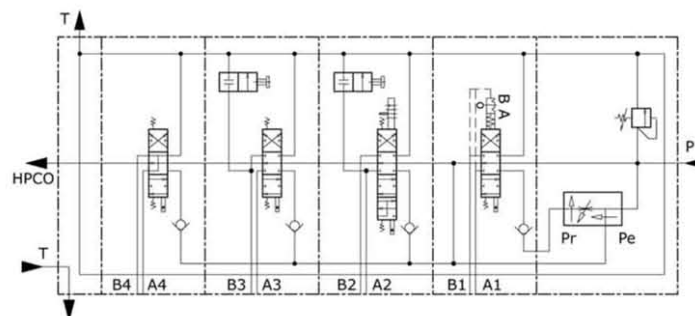
Agricultural machines



Dimensions



Hydraulic schematic



Features

Ideal for tractors between 80 to 120 HP

Rear mounted.

Cable actuation

Port relief valves, SE/DE valves, priority flow working section

Cylinder and motor spool, floating and kickout working section

Inlet section with flow divider and interface for breaking trailer valve

Outlet section with interface for BOSCH EHR hitch valve

Connectors for fast coupling system