

Part number:

HYDROMA

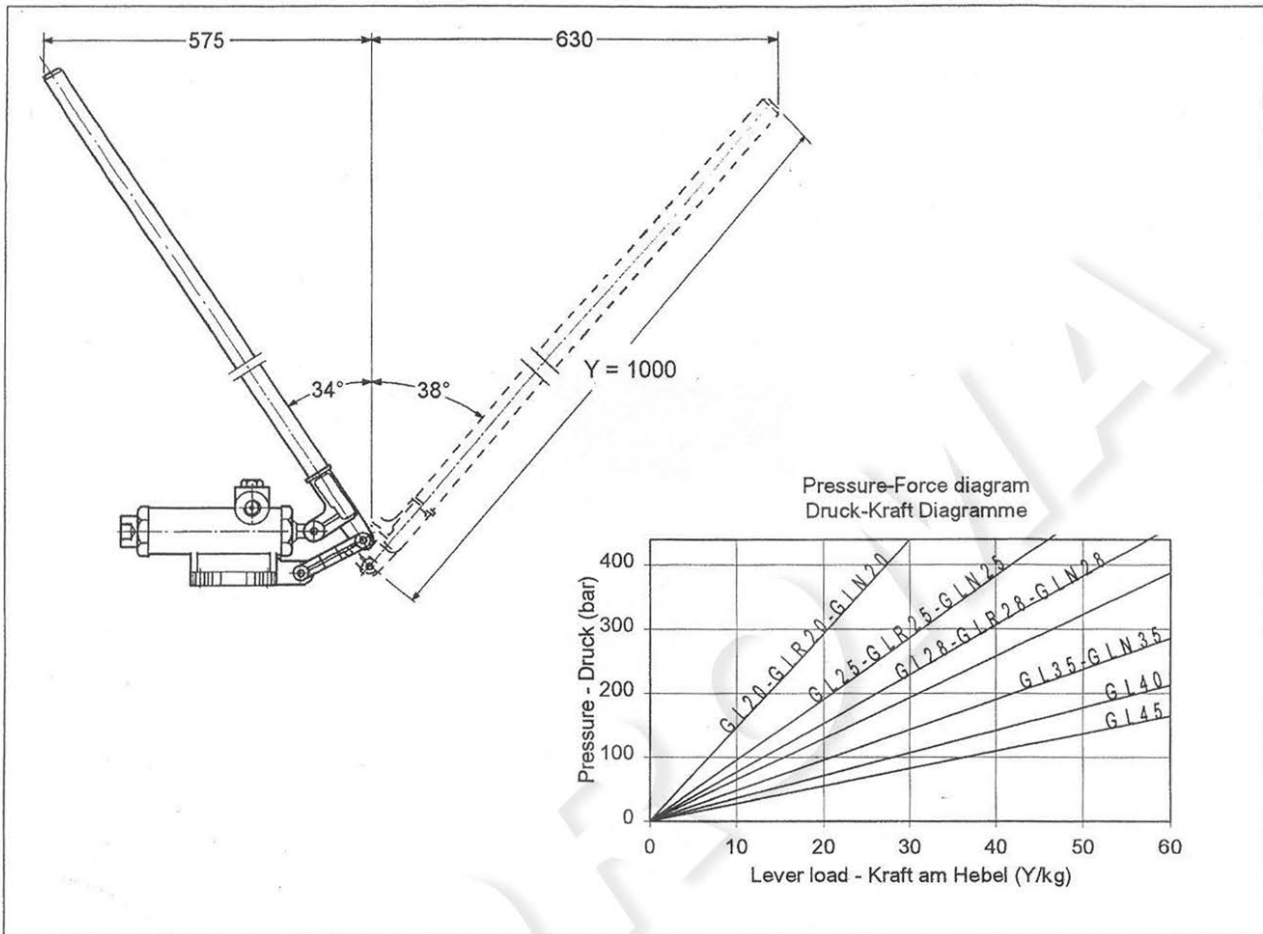
HYDRAULICKÉ SYSTÉMY

**HIDROMA
SISTEMS**

UKŁADY HYDRAULICZNE

HYDROMA

ГИДРАВЛИЧЕСКИЕ СИСТЕМЫ

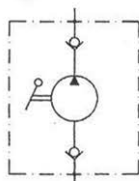


**PUMP TYPE
PUMPE TYPE GL**

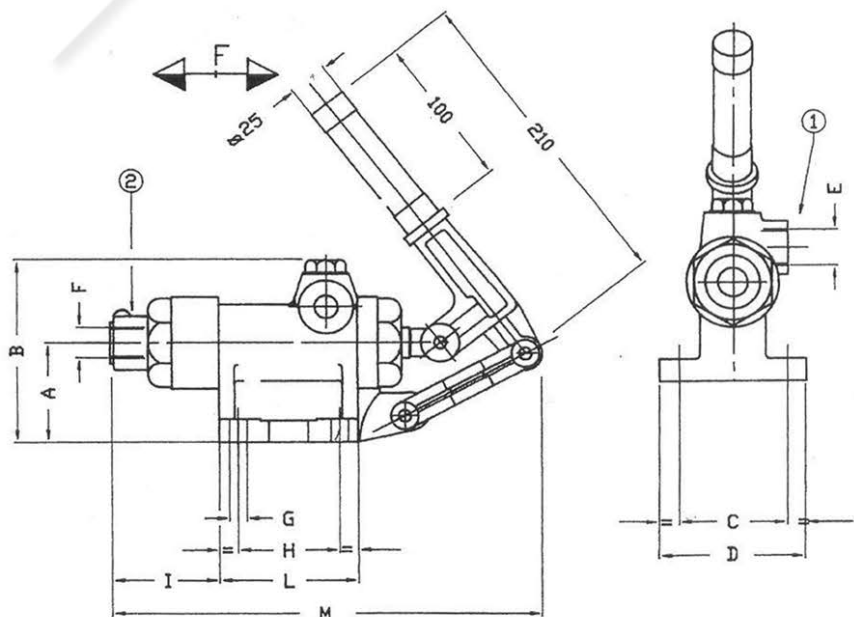
**DOUBLE STROKE FUNCTION
DOPPELHUB-FUNKTION**

TYPE TYP	DELIVERY FÖRDERMENGE cm ³	PRESSURE DRUCK bar
GL 20	18	460
GL 25	29	320
GL 28	36	250
GL 30	42	220
GL 35	57	160
GL 40	87	120
GL 45	111	90

Weight - Gewicht: 4.5 kg



- (1) Pressure port - Druckanschluss
- (2) Suction port - Sauganschluss



TYPE - TYP	A	B	C	D	E	F	G	H	I	L	M
GL 20 - 25 - 28 - 30 - 35	67	120	66	95	3/8"G	1/2"G	N.4 Ø11	63	68	89	285
GL 40 - 45	71	137	71	102	1/2"G	1/2"G	N.4 Ø11	73	71	104	295

Authorised by the Italian Ministry of Mercantile Marine with Nr. 47/1988 and 48/1988 - Authorised Italian Navy register (RINA) Nr. 17874
Zugelassen vom italienischen Ministerium der Handelsmarine mit Nr. 47/1988 und 48/1988 - Zulassung Schiffregister (RINA) Nr. 17874