

Part number:

**HYDROMA**

HYDRAULICKÉ SYSTÉMY

**HIDROMA  
SYSTEMS**

UKŁADY HYDRAULICZNE

**HYDROMA**

ГИДРАВЛИЧЕСКИЕ СИСТЕМЫ

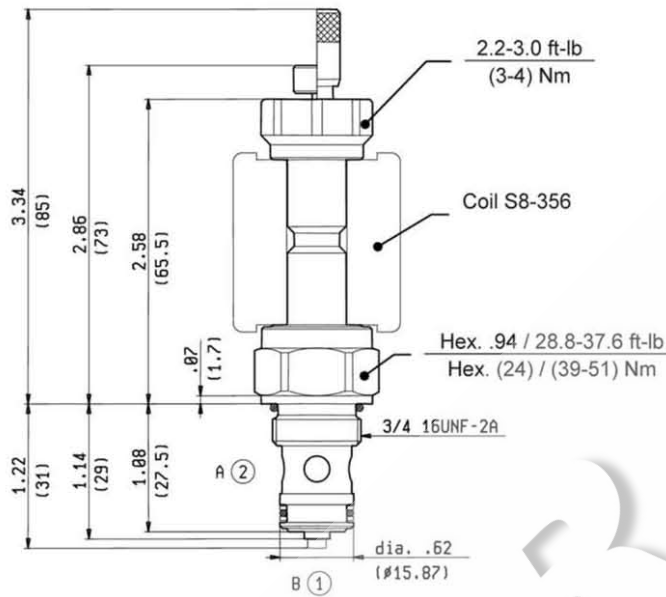
**SOLENOID OPERATED VALVES  
POPPET 2-WAY NORMALLY OPEN  
SPECIAL CAVITY**

**VEI-8A-2A-06-NA-VU-S1-NSS**

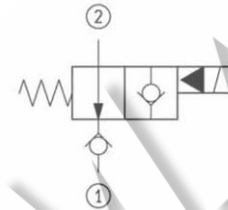
**019-E**

**OD.15.12.19 - Y - S0**

**PATENT PENDING**

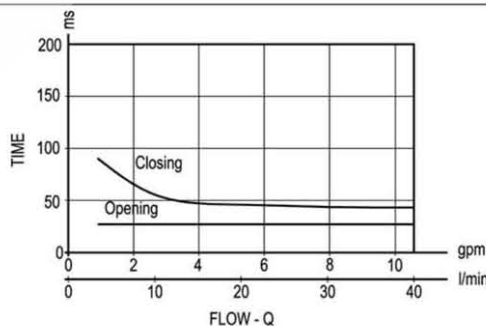
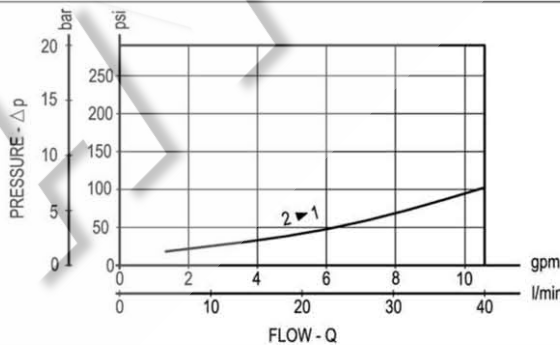


Inches  
(mm)



**TECHNICAL DATA**

Maximum Operating Pressure	5000 psi (350 bar)
Fatigue Cycle Life at 5000 psi (350 bar) and 0.5 Hz (1 s ON - 1 s OFF)	10 million cycles
Rated Flow	11 gpm (40 l/min)
Cavity - Tooling (019-E)	page CT.S.006.U
Line bodies	page MN2.S...
Weight	0.286 lbs (0.130 kg)
Fluids - Temperatures	page 7.01.040
Testing Conditions - Seals	page 7.01.040
Internal Leakage	page 7.01.040
Filtration : 25 µm nominal or better	page 7.01.050
Minimum Voltage Required	90% of nominal
Coils must be ordered separately	page 1.71.042
Mounting Position	unrestricted



**Y ORDERING OPTIONS**

<b>1A</b>	Standard	
<b>1B</b>	Push Style Manual Override	
<b>1C</b>	Push and Twist Style Manual Override	