

Part number:

**HYDROMA**

HYDRAULICKÉ SYSTÉMY

**HIDROMA  
SYSTEMS**

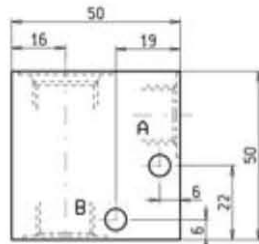
UKŁADY HYDRAULICZNE

**HYDROMA**

ГИДРАВЛИЧЕСКИЕ СИСТЕМЫ

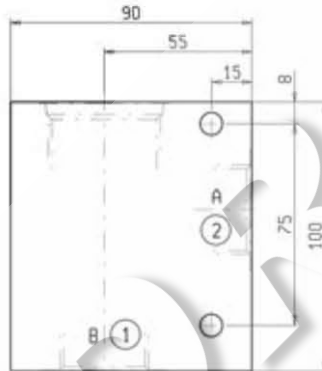
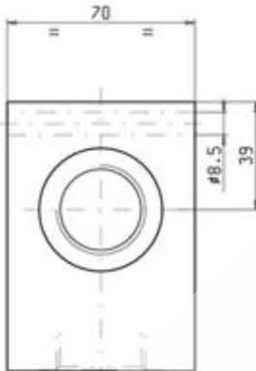
**STANDARD MANIFOLDS**

**2 WAY ALUMINUM**



CAVITY **019-E**  
Dimensions on page 7.01.12

| ORDERING CODE | PORTS<br>A - B | WEIGHT<br>Kg |
|---------------|----------------|--------------|
| OC.10.09.103  | G 1/4          | 0.150        |
| OC.10.09.054  | G 3/8          | 0.150        |



CAVITY **004**  
Dimensions on page 1.11.96

| ORDERING CODE | PORTS<br>A - B | WEIGHT<br>Kg |
|---------------|----------------|--------------|
| OC.10.09.040  | G 1            | 1.200        |
| OC.10.09.041  | G 1-1/4        | 1.200        |

**MAX. PRESSURE**      **250 bar**

**FEATURES**

- Standard manifolds in high-strength aluminum TA-7020 for working pressures up to 250 bar.