

Part number:

HYDROMA

HYDRAULICKÉ SYSTÉMY

**HIDROMA
SYSTEMS**

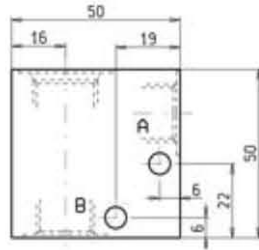
UKŁADY HYDRAULICZNE

HYDROMA

ГИДРАВЛИЧЕСКИЕ СИСТЕМЫ

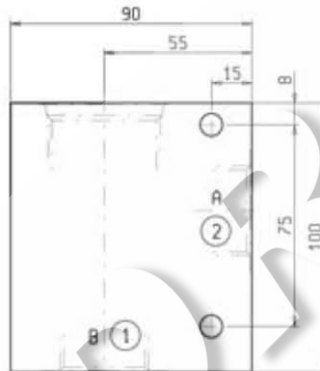
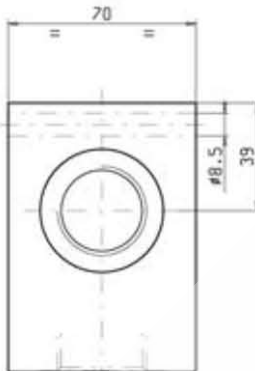
MANIFOLDS

2 WAY STEEL



CAVITY **019-E**
Dimensions on page 7.01.12

ORDERING CODE	PORTS A - B	WEIGHT Kg
OC.10.09.102	G 1/4	0.450
OC.10.09.101	G 3/8	0.450



CAVITY **004**
Dimensions on page 1.11.96

ORDERING CODE	PORTS A - B	WEIGHT Kg
OC.10.09.122	G 1	3.500
OC.10.09.056	G 1-1/4	3.500

MAX. PRESSURE 350 bar

FEATURES

- These manifolds can be supplied upon request for working pressures up to 350 bar and for fatigue cycle applications.