

Part number:

**HYDROMA**

HYDRAULICKÉ SYSTÉMY

**HIDROMA  
SYSTEMS**

UKŁADY HYDRAULICZNE

**HYDROMA**

ГИДРАВЛИЧЕСКИЕ СИСТЕМЫ

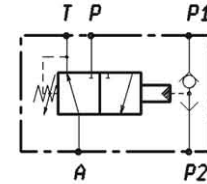
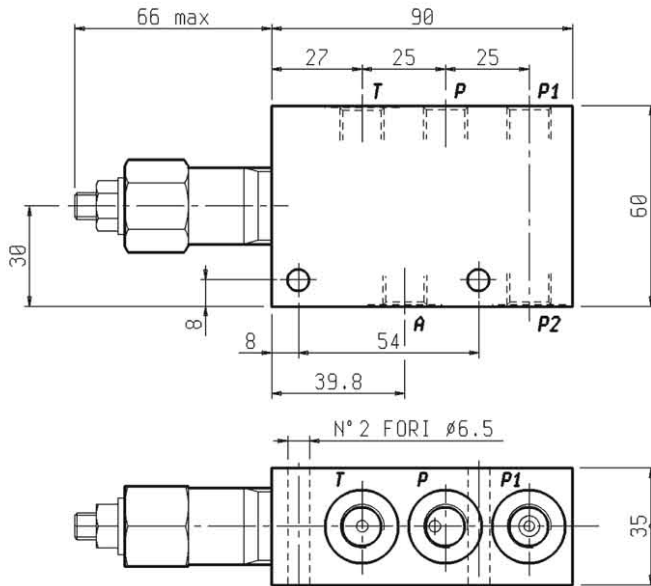
**ELEMENTO DIREZIONALE 3 VIE 2 POSIZIONI  
A COMMUTAZIONE TRAMITE ATTACCO "P1" E "P2"**

ED-3-2-UF-14-05-A

DENOMINAZIONE VALVOLA  
VALVE DENOMINATION

05.93.34.03.09.05.00.A

CODICE D'ORDINAZIONE  
ORDERING CODE



Pressione di lavoro max  
350 bar

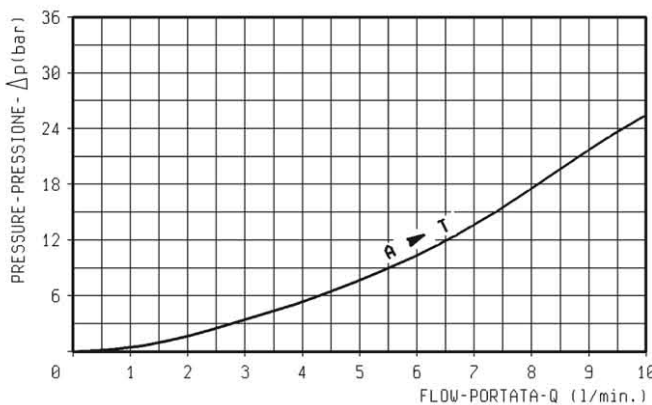
Max working pressure  
350 bar

Portata max  
8 l/min.

Flow max  
8 l/min.

Peso Kg 0,66

Weight Kg 0,66



**REGOLAZIONI  
ADJUSTMENTS**

vite esterna  
esagono incassato  
leakproof hex.  
socket screw



**MOLLE - SPRINGS**

Campo taratura min-max bar Adj.press. range bar	Incremento pressione bar/giro vite Pressure increase bar/turn	Taratura standard bar(0-5 1/1') Std.setting bar (made at 5 1/1')	Codice ordinazione Ordering code	Colore Colour
3.5 - 8	0.5	5	03.51.01.137	

**ATTACCHI - PORT SIZE**

A - T - P - P1 - P2
G 1/4