

Part number:

**HYDROMA**

HYDRAULICKÉ SYSTÉMY

**HIDROMA  
SYSTEMS**

UKŁADY HYDRAULICZNE

**HYDROMA**

ГИДРАВЛИЧЕСКИЕ СИСТЕМЫ

# 1BK4



Filetto M14x1,5 profondità utile 12 mm.  
Filetto M18x1,5 profondità utile 12 mm.  
Fissaggio pompa: n. 2 viti M8,  
coppia di serraggio 23 ± 2,4 Nm.

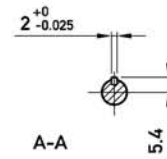
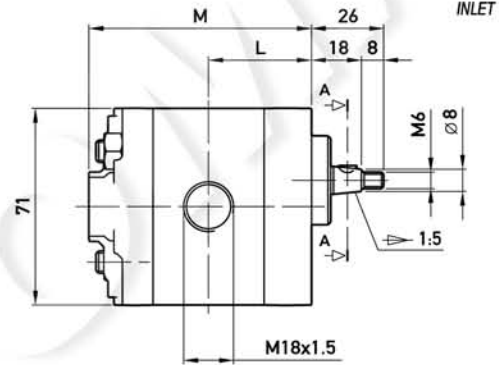
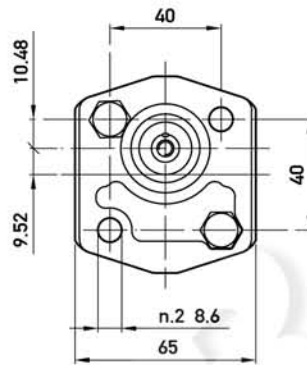
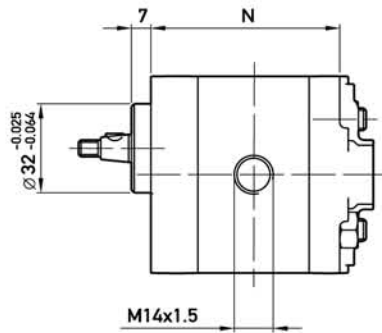
**OPZIONI**

A richiesta il modello 1BK4 è disponibile  
anche in versione "KA" (porta di aspirazione  
G3/8 e di mandata G1/4 sul coperchio).

M14x1.5 thread depth 12 mm.  
M18x1.5 thread depth 12 mm.  
To mount the pump: n. 2 M8 screws, with a  
torque wrench setting fixed at 23 ± 2.4 Nm.

**OPTIONS**

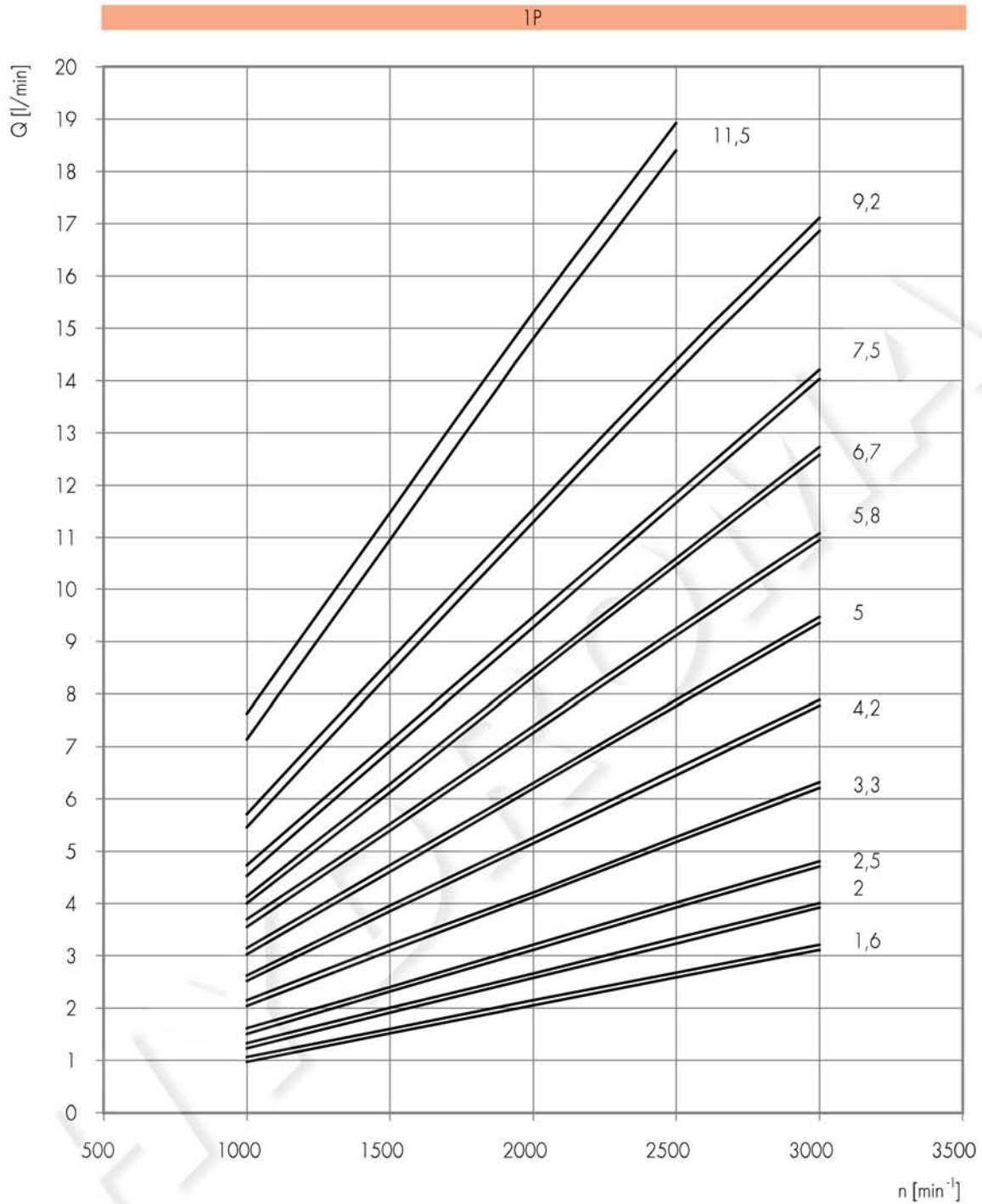
Upon request, 1BK4 model is also available  
in "KA" version (G3/8 as inlet port  
and G1/4 as outlet port in the cover).

MANDATA  
OUTLET

TIPO TYPE	CILINDRATA DISPLACEMENT	PORTATA a 1500 giri/min FLOW at 1500 rev/min	PRESSIONI MASSIME MAX PRESSURE			VELOCITÀ MASSIMA MAX SPEED	DIMENSIONI DIMENSIONS		
			P <sub>1</sub>	P <sub>2</sub>	P <sub>3</sub>		L	M	N
	cm <sup>3</sup> /giro [cm <sup>3</sup> /rev]	litri/min [litres/min]	bar	bar	bar	giri/min [rpm]	mm	mm	mm
1BK4 <b>D</b> 1,6	1,1	1,6	230	250	270	6000	33	74	62
1BK4 <b>D</b> 2	1,3	2,0	230	250	270	6000	33,5	75	63
1BK4 <b>D</b> 2,5	1,6	2,4	230	250	270	6000	34	76	64
1BK4 <b>D</b> 3,3	2,1	3,2	230	250	270	6000	35	78	66
1BK4 <b>D</b> 4,2	2,7	4,0	230	250	270	6000	36	80	68
1BK4 <b>D</b> 5	3,2	4,8	210	230	250	5000	37	82	70
1BK4 <b>D</b> 5,8	3,7	5,6	210	230	250	4500	38	84	72
1BK4 <b>D</b> 6,7	4,2	6,4	210	230	250	4000	39	86	74
1BK4 <b>D</b> 7,5	4,8	7,2	190	210	230	3500	40	88	76
1BK4 <b>D</b> 9,2	5,8	8,7	190	210	230	3000	42	92	80
1BK4 <b>D</b> 11,5	8,0	11,9	160	180	200	2100	46	100	88

# 1P CURVE CARATTERISTICHE

# 1P PERFORMANCE CURVES



Le curve sono state ottenute alla temperatura di 50°C, utilizzando olio con viscosità 30 cSt alle pressioni sotto riportate.

Each curve has been obtained at 50°C, using oil with viscosity 30 cSt at these pressure.

1,6  
2  
2,5  
3,3  
4,2

- 25-230 bar

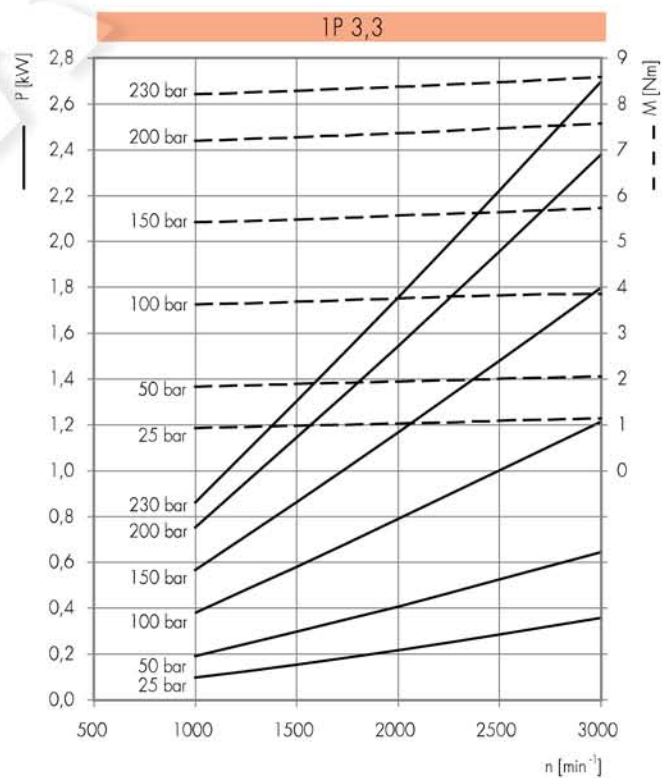
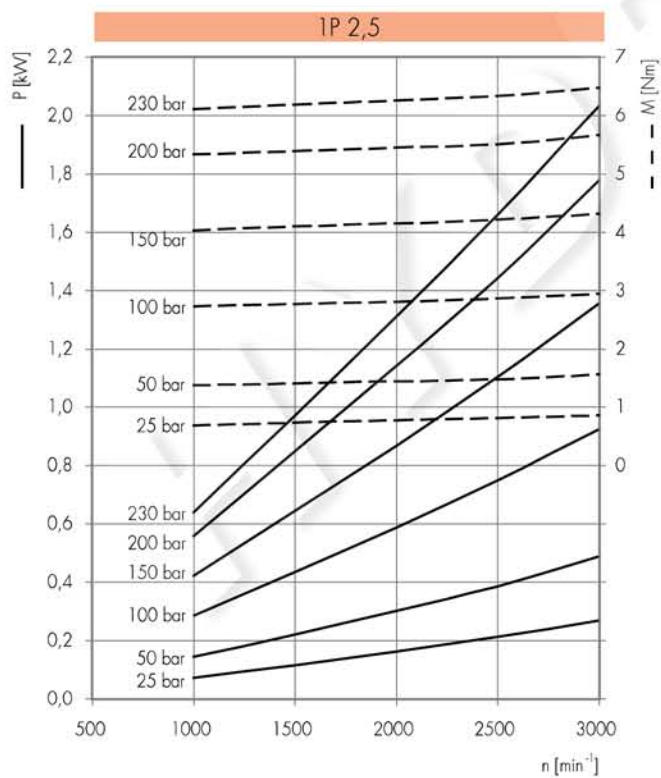
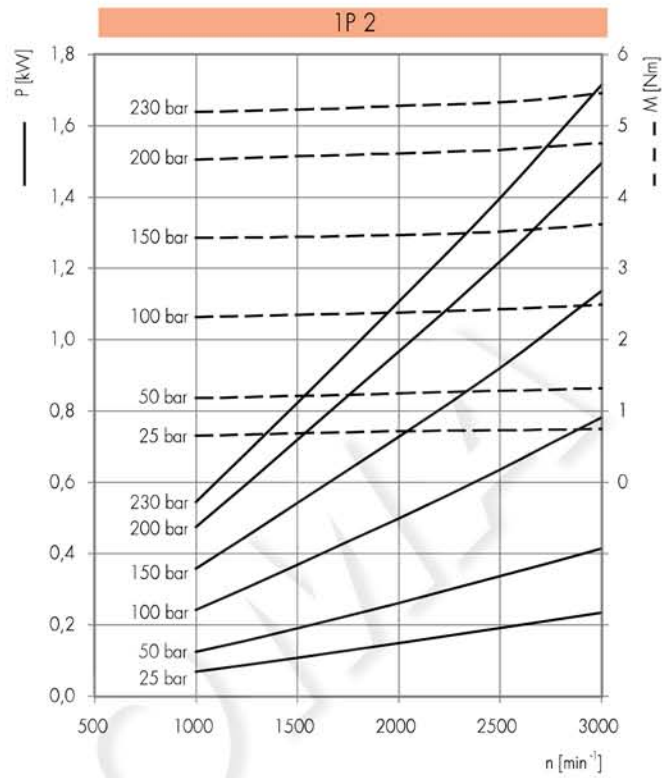
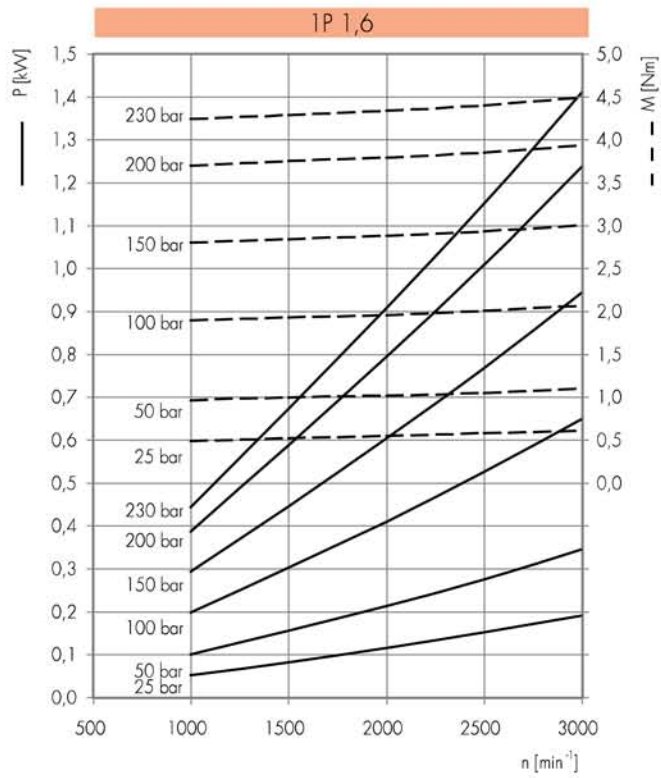
5  
5,8  
6,7

- 25-210 bar

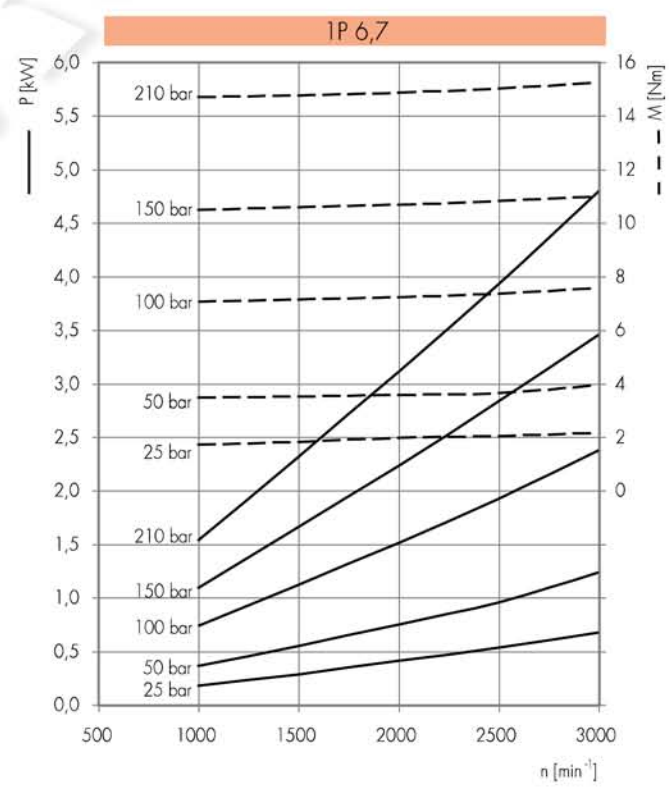
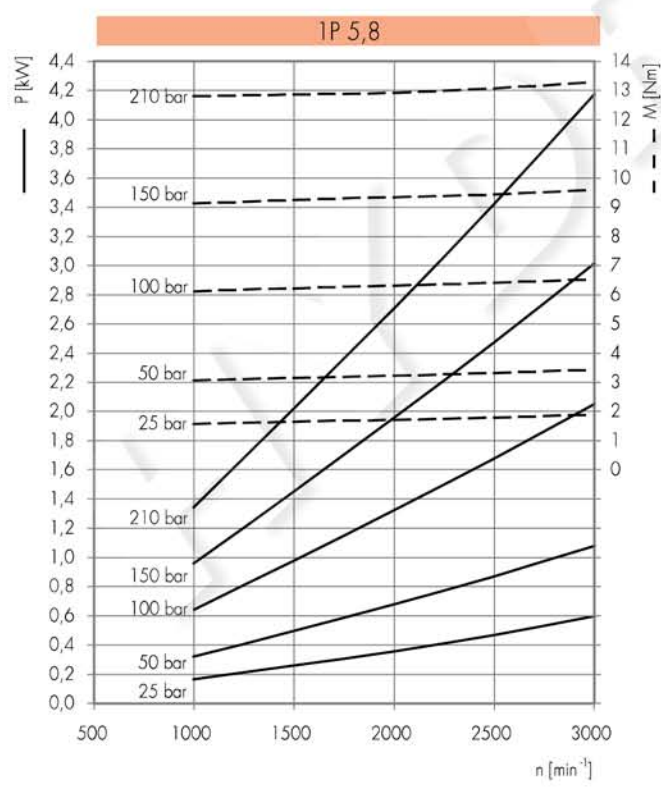
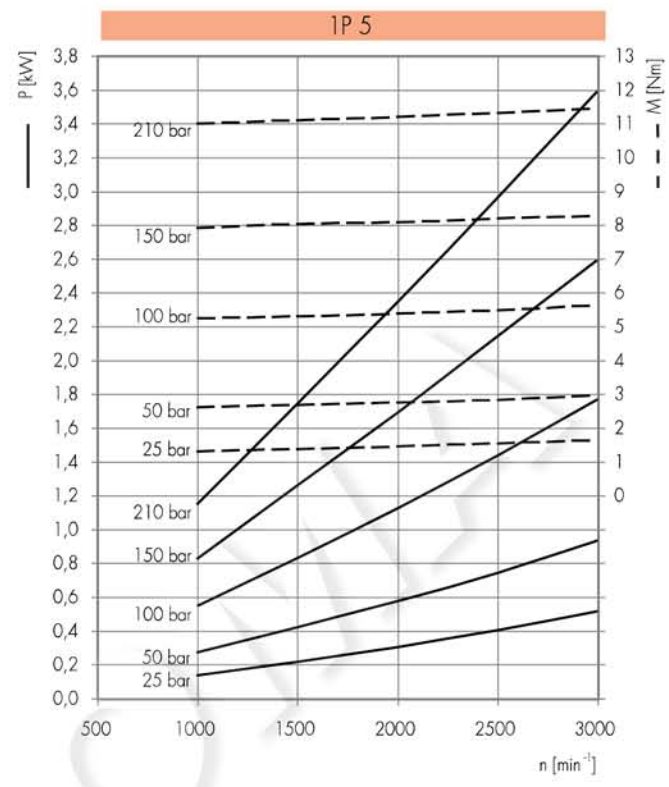
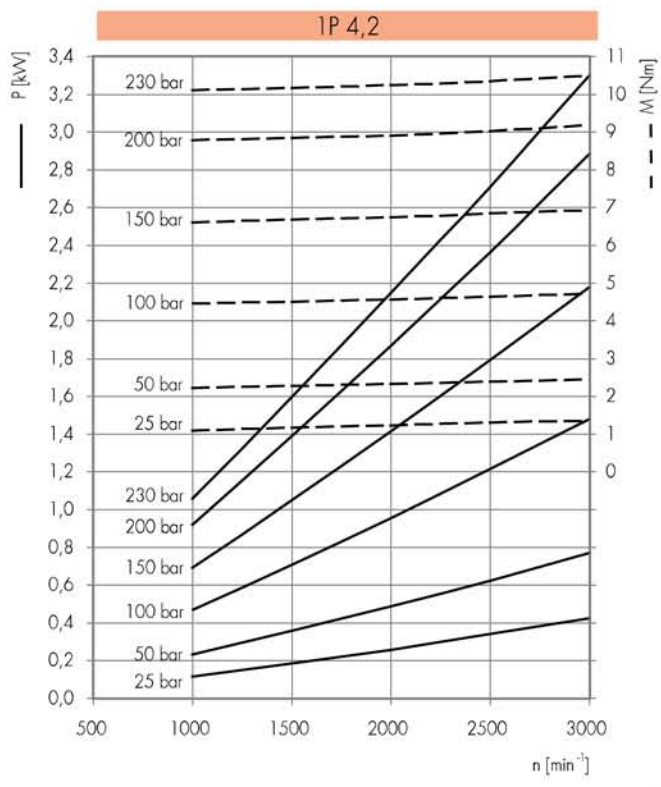
7,5  
9,2

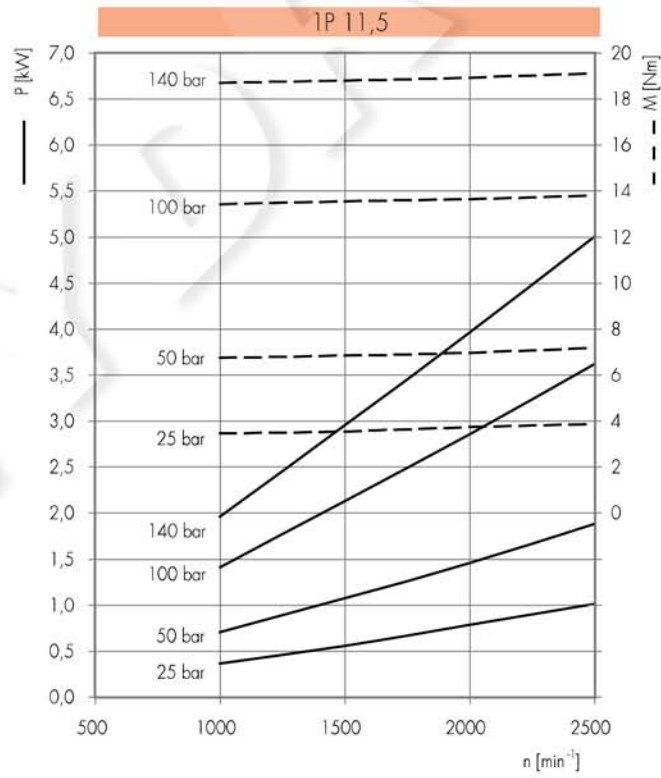
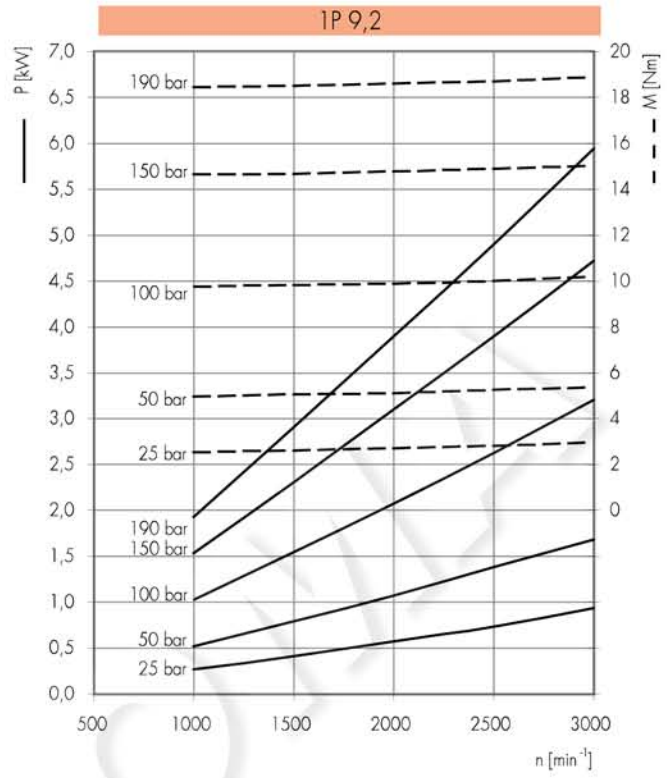
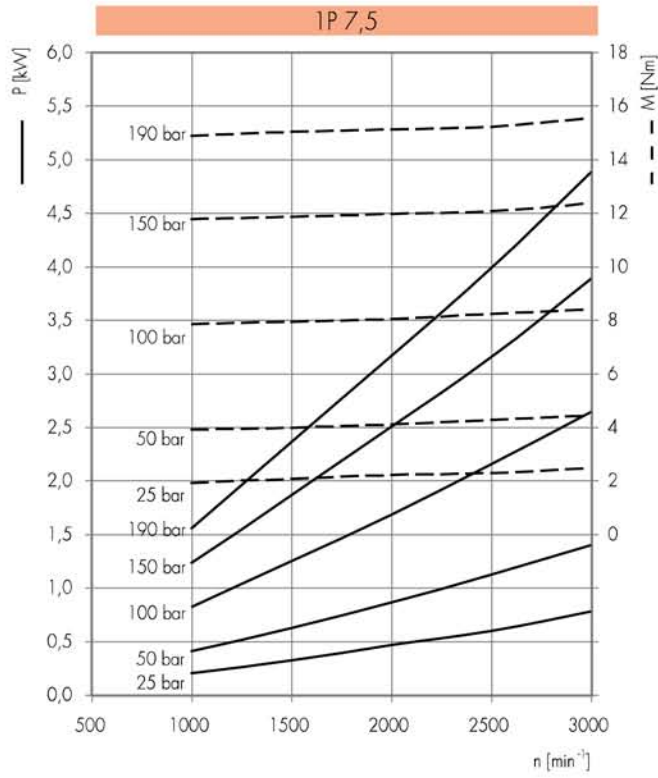
- 25-190 bar

11,5 - 25-140 bar









## COME ORDINARE

Diagramma esplicativo per facilitare la procedura d'ordine.

TIPO	ROTAZIONE	TAGLIA	TIPO ALBERO	PORTE	VERSIONI SPECIALI	VALVOIA									
1P	D destra	1.6	- omettere	-	- omettere	<table border="1"> <tr> <td>VALVOIA LIMITATRICE DI PRESSIONE</td> <td>DRENAGGIO</td> <td>SETTAGGIO</td> </tr> <tr> <td>- assente</td> <td>DI interno</td> <td>valore (bar)</td> </tr> <tr> <td>VM presente **</td> <td>DE esterno</td> <td></td> </tr> </table>	VALVOIA LIMITATRICE DI PRESSIONE	DRENAGGIO	SETTAGGIO	- assente	DI interno	valore (bar)	VM presente **	DE esterno	
VALVOIA LIMITATRICE DI PRESSIONE	DRENAGGIO	SETTAGGIO													
- assente	DI interno	valore (bar)													
VM presente **	DE esterno														
K1P	S sinistra	2	G a penna	GAS	Q anello di tenuta sull'albero										
KL1P	R reversibile	2.5	C conico *	KA	V alte temperature										
KF1P		...		NPT	ST temperature speciali										
1BK4				X	TR anello di tenuta sull'albero rinforzato										
1BK7					Z corpo spessore ridotto										
1PBW															

\* Specificare solo per i tipi K1P, KL1P, KF1P  
 \*\* Disponibilesolo per i tipi 1P, KL1P, KF1P, 1BK4, 1BK7

## HOW TO ORDER

Explanatory scheme to make your orders easier.

TYPE	ROTATION	SIZE	SHAFT TYPE	PORTS	SPECIAL VERSIONS	VALVE									
1P	D clockwise	1.6	- omit	-	- omit	<table border="1"> <tr> <td>PRESSURE RELIEF VALVE</td> <td>DRAIN</td> <td>SETTING</td> </tr> <tr> <td>- not mounted</td> <td>DI internal</td> <td>value (bar)</td> </tr> <tr> <td>VM mounted **</td> <td>DE external</td> <td></td> </tr> </table>	PRESSURE RELIEF VALVE	DRAIN	SETTING	- not mounted	DI internal	value (bar)	VM mounted **	DE external	
PRESSURE RELIEF VALVE	DRAIN	SETTING													
- not mounted	DI internal	value (bar)													
VM mounted **	DE external														
K1P	S counter-clockwise	2	G tang	GAS	Q shaft seal										
KL1P	R reversible	2.5	C tapered *	KA	V high temperature										
KF1P		...		NPT	ST special temperature										
1BK4				X	TR reinforced shaft seal										
1BK7					Z body thickness manufacturing										
1PBW															

\* Shaft type choice is compulsory only for K1P, KL1P, KF1P.  
 \*\* Available only for type 1P, KL1P, KF1P, 1BK4, 1BK7.