

Part number:

021-10022

HYDROMA

HYDRAULICKÉ SYSTÉMY

**HIDROMA
SYSTEMS**

UKŁADY HYDRAULICZNE

HYDROMA

ГИДРАВЛИЧЕСКИЕ СИСТЕМЫ

In-line manifolds

PD06

**HA 0006
1/2003**

Size 06 • ...3626 PSI (250 bar)

Replaces
HA 0006 2/2000

- For in-line mounting of hydraulic valves
- Parallel connection of ports P and T
- 1 ... 10 sections possible
- Installation dimensions to ISO 4401-03-02-0-94 and DIN 24 340-A6
- Mounting Accessories



Ordering Code

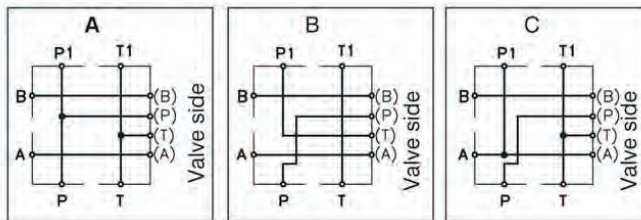
PD06 **-AL**

In-line connecting platte

Material - aluminium

Nominal size

Connection
Functional symbols



Number of section

1	1 section
2	2 sections
3	3 sections
4	4 sections
5	5 sections
6	6 sections

Survey of Types

Type	Ordering number	Weight
PD06A1-AL	760-0031	1.572 lbs (0.713 kg)
PD06B1-AL	760-0037	1.574 lbs (0.714 kg)
PD06C1-AL	760-0038	1.568 lbs (0.711 kg)
PD06A2-AL	760-0032	3.109 lbs (1.410 kg)
PD06A3-AL	760-0033	4.652 lbs (2.110 kg)
PD06A4-AL	760-0034	6.217 lbs (2.820 kg)
PD06A5-AL	760-0035	7.771 lbs (3.525 kg)
PD06A6-AL	760-0036	9.326 lbs (4.230 kg)

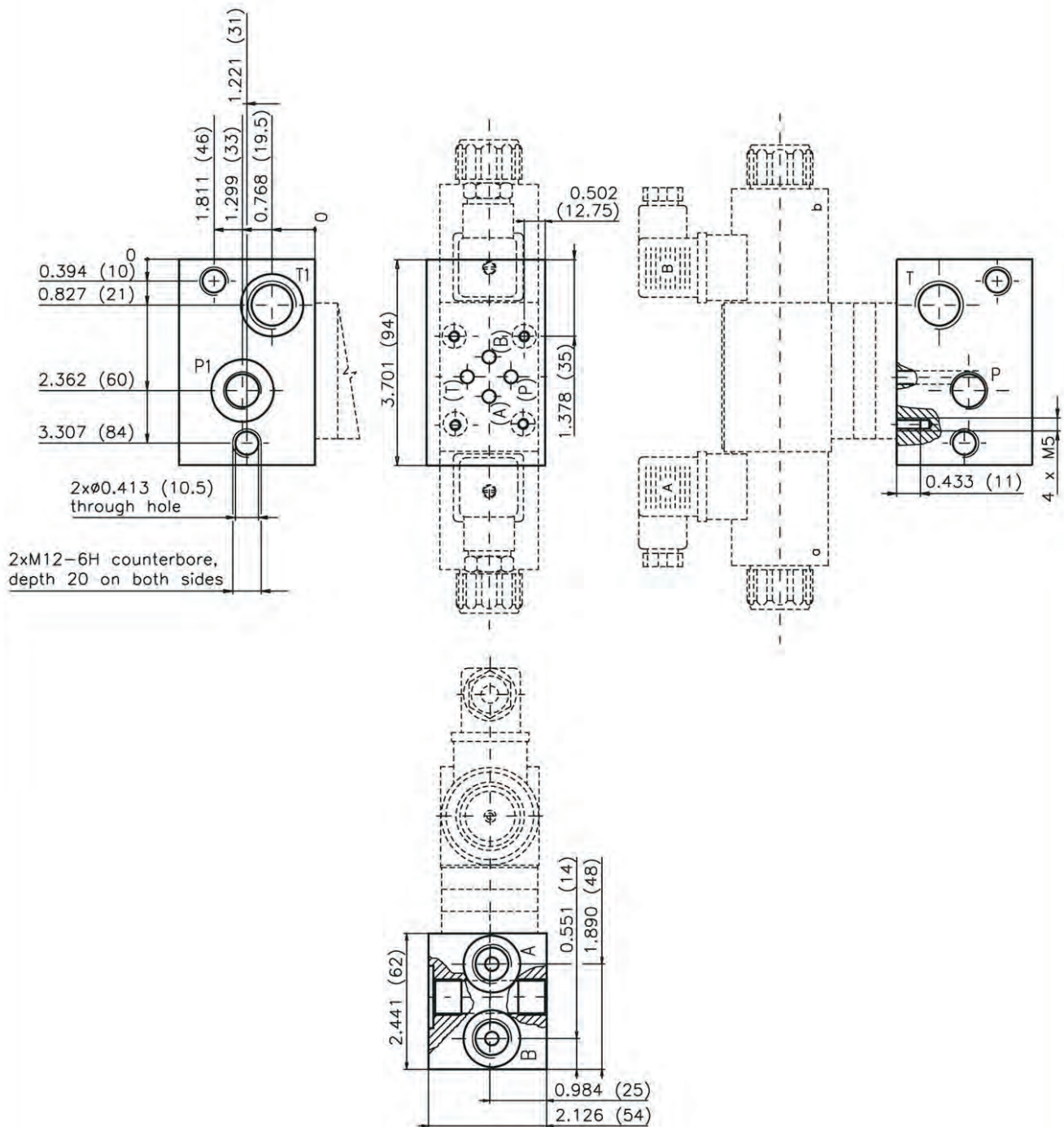
**FOR PREFERRED TYPES SEE BOLD TYPING IN ORDERING CODE
AND TABLE OF SURVEY OF TYPES**

Valve Dimensions

Dimensions in inches and millimeters (in brackets)

Plates with 1 section

Plates with 1, 2, 3 and 4 sections enable combinations up to 10 sections



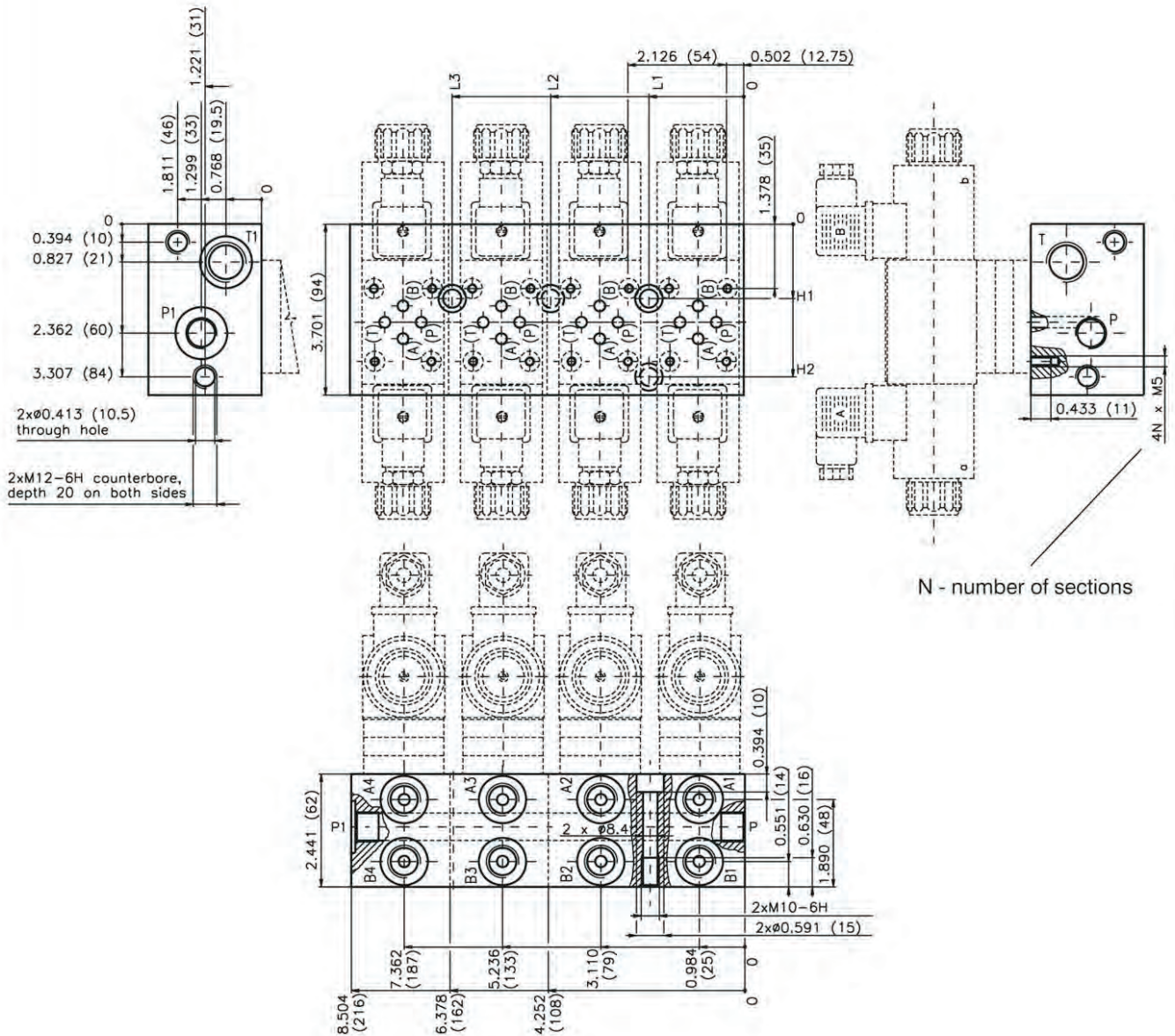
Port	A, B	P	T	P1	T1
Thread	G3/8	G3/8	G1/2	G3/8	G1/2
Depth of thread	0.512 (13)	0.512 (13)	0.670 (17)	0.512 (13)	0.670 (17)
Counterbore	Ø0.945 (24)	-	-	Ø1.118-0.008 (28.4-0.2)	Ø1.118-0.008 (28.4-0.2)
Depth of counterbore	0.020 (0.5)	-	-	0.083-0.004 (2.1-0.1)	0.083-0.004 (2.1-0.1)
O-Ring [mm]	-	-	-	23.4 x 2.62	23.4 x 2.62

Valve Dimensions

Dimensions in inches and millimeters (in brackets)

Plates with 2 ... 4 sections

Plates with 1, 2, 3 and 4 sections enable combinations up to 10 sections



Number of sections	L1	L2	L3	H1	H2
2	2.047 (52)	-	-	1.614 (41)	3.307 (84)
3	2.047 (52)	4.173 (106)	-	1.614 (41)	-
4	2.047 (52)	-	6.300 (160)	1.614 (41)	-

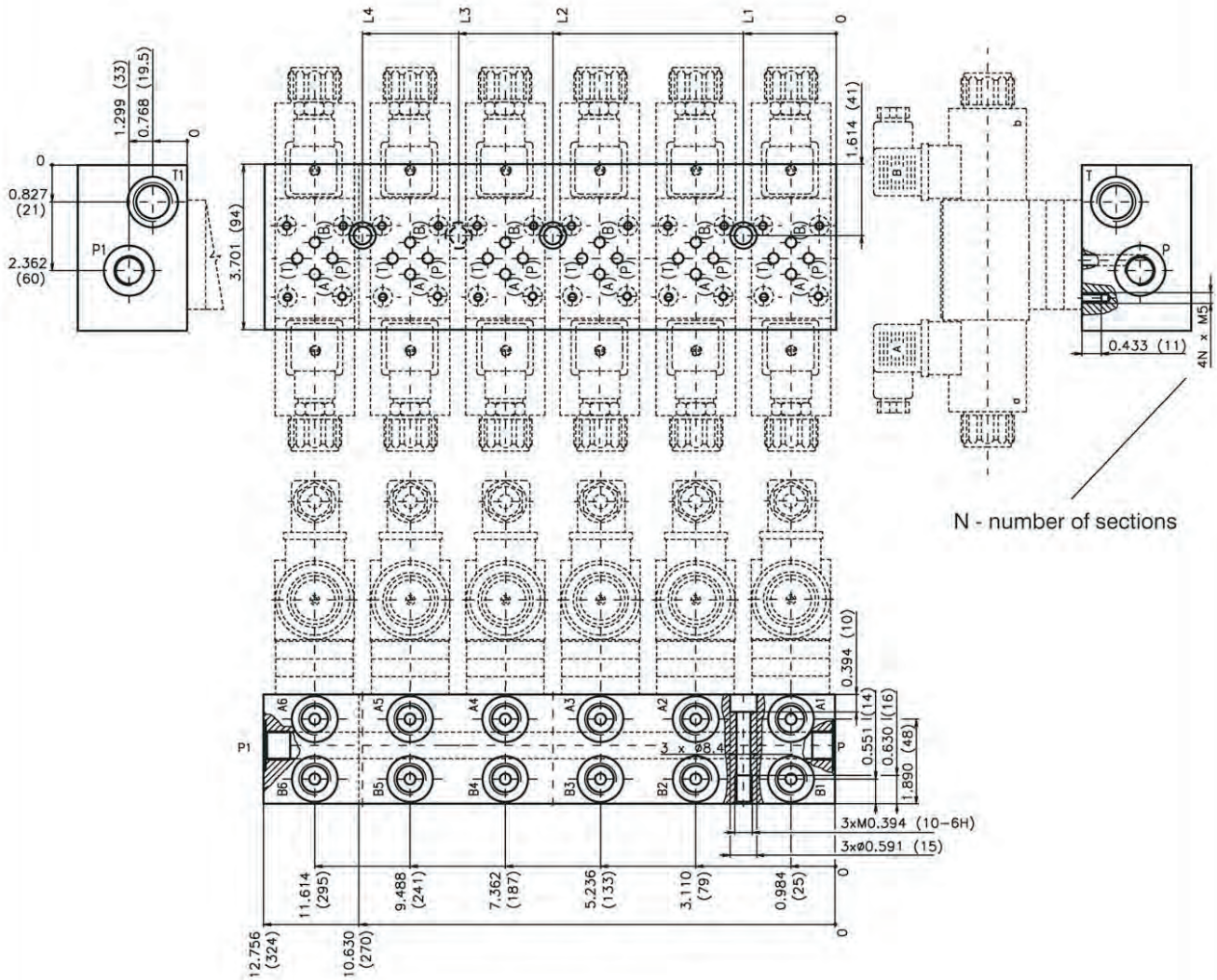
Port	A1...A4, B1...B4	P	P1	T	T1
Thread	G3/8	G3/8	G3/8	G1/2	G1/2
Depth of thread	0.512 (13)	0.512 (13)	0.512 (13)	0.670 (17)	0.670 (17)
Counterbore	Ø0.945 (24)	-	Ø1.118-0.008 (28.4-0.2)	-	Ø1.118-0.008 (28.4-0.2)
Depth of counterbore	0.020 (0.5)	-	0.083-0.004 (2.1-0.1)	-	0.083-0.004 (2.1-0.1)
O-Ring [mm]	-	-	23.4 x 2.62	-	23.4 x 2.62

Valve Dimensions

Dimensions in inches and millimeters (in brackets)

Plates with 5 ... 6 sections

Plates with 5 and 6 do not enable any other combinations



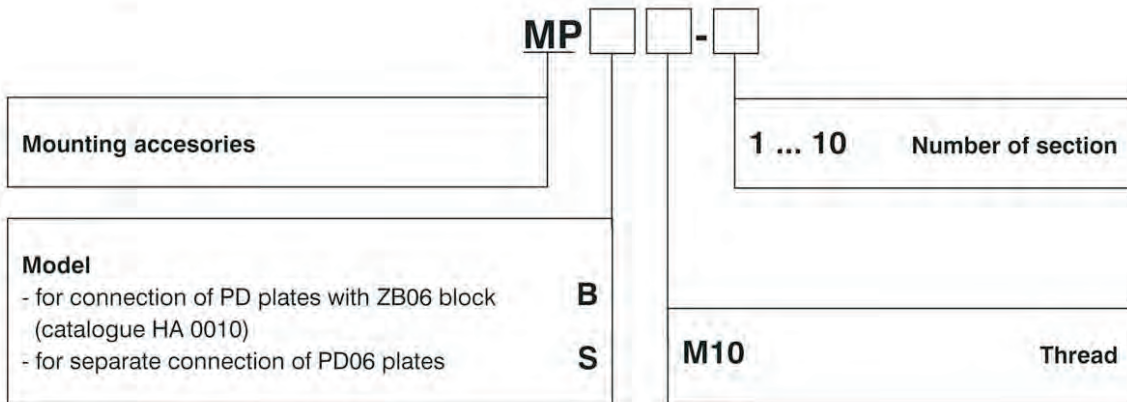
Number of sections	L1	L2	L3	L4
5	2.047 (52)	6.300 (160)	8.425 (214)	-
6	2.047 (52)	6.300 (160)	-	10.551 (268)

Port	A1...A6, B1...B6	P, P1	T, T1
Thread	G3/8	G3/8	G1/2
Depth of thread	0.512 (13)	0.512 (13)	0.670 (17)
Counterbore	Ø0.945 (24)	Ø1.108 (28)	Ø1.108 (28)
Depth of counterbore	0.020 (0.5)	0.020 (0.5)	0.020 (0.5)

Mounting Accessories

Set of stud bolts, nuts and washers for connection of PD06 plates

Ordering Code



Survey of Types

Number of sections	Total block length - L [mm]	Model B		Model S	
		Type	Ordering number	Type	Ordering number
1	2.126 (54)	MPB10-1	760-0050	-	-
2	4.252 (108)	MPB10-2	760-0051	MPS10-2	760-0060
3	6.378 (162)	MPB10-3	760-0052	MPS10-3	760-0061
4	8.504 (216)	MPB10-4	760-0053	MPS10-4	760-0062
5	10.630 (270)	MPB10-5	760-0054	MPS10-5	760-0063
6	12.760 (324)	MPB10-6	760-0055	MPS10-6	760-0064
7	14.882 (378)	MPB10-7	760-0056	MPS10-7	760-0065
8	17.010 (432)	MPB10-8	760-0057	MPS10-8	760-0066
9	19.134 (486)	-	-	MPS10-9	760-0067
10	21.260 (540)	-	-	MPS10-10	760-0068

Dimensions

Dimensions in inches and millimeters (in brackets)

