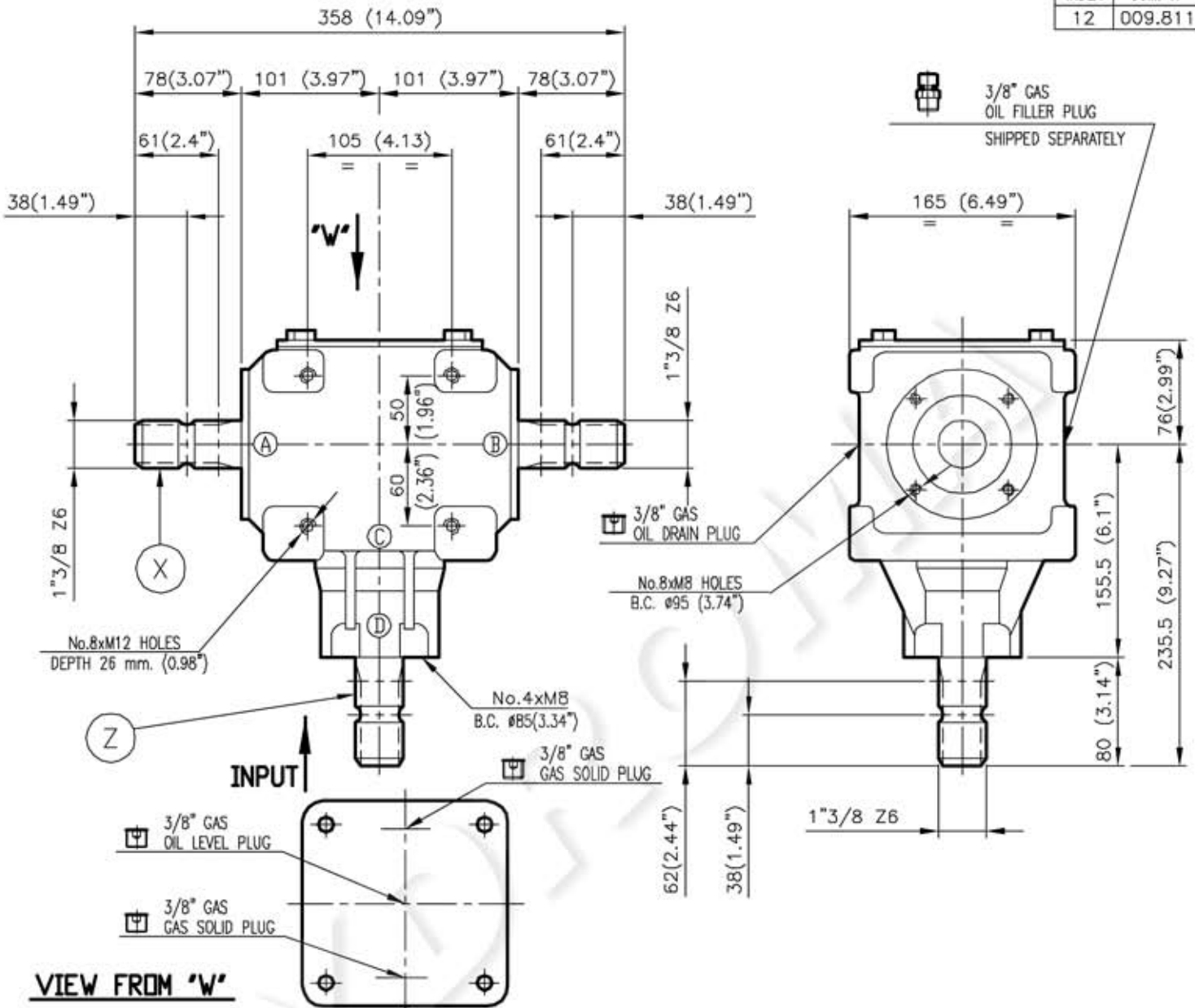


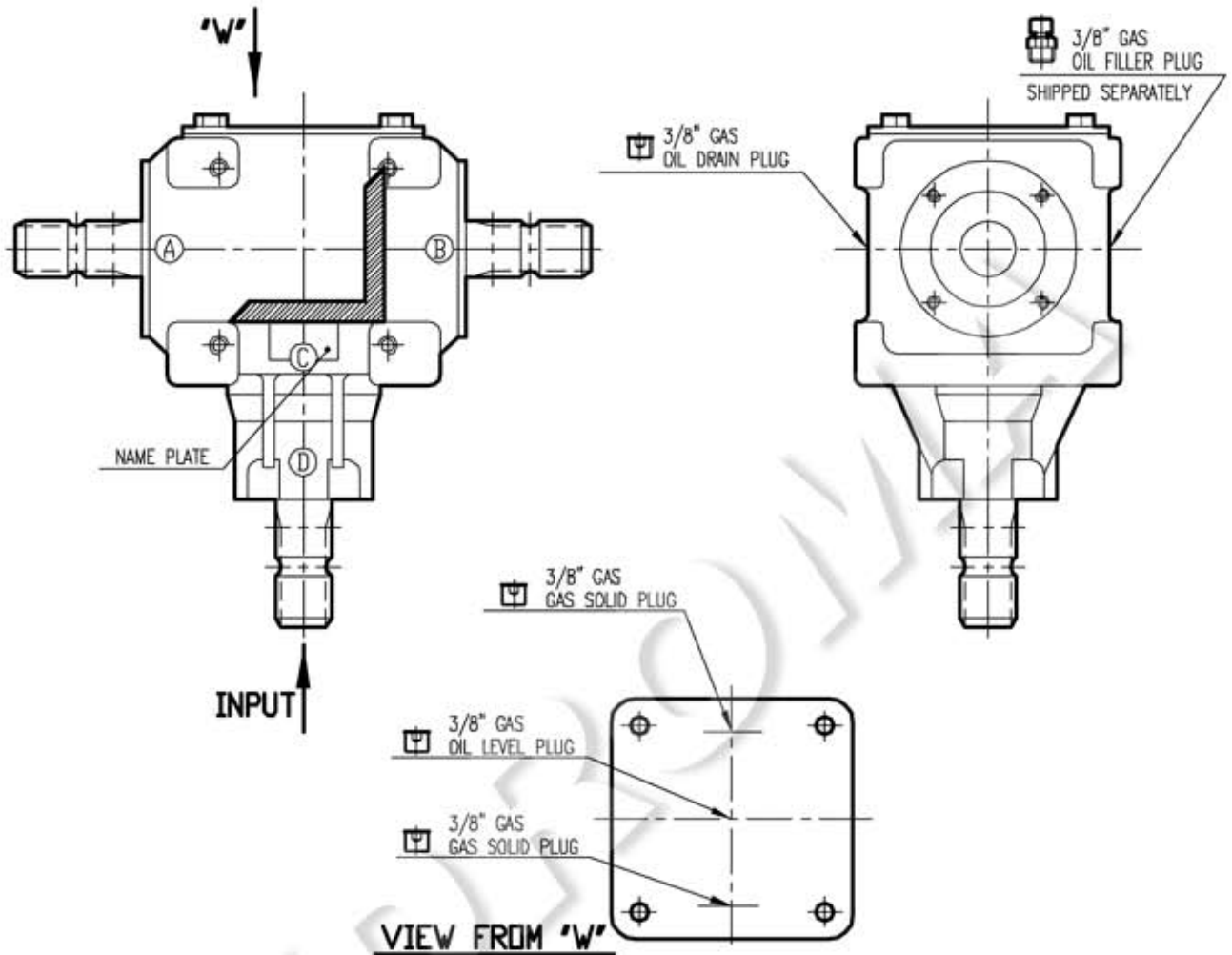
REF.	-	DESIGNATION	T-27J
DATE	16/MAR/04	CODE	9.267.806.10

INDEX	COM. N°
12	009.811



90° BEVEL GEAR UNIT	Ratio <i>i</i>		Rated input r.p.m.		Rated input power HP   kW		Rated output torque da Nm		Weight Kg		Oil <input checked="" type="checkbox"/> Grease <input type="checkbox"/> Type   Quantity Kg.			
	1 : 1		540		55   40.4		69.4		21		SAE.90EP   Lt. 1.2			
	Gear Arrangement			Bevel couplings				Cylindrical couplings					Bearings	
				Helicoidal		Straight		Helicoidal		Straight		A 6207 B 30207 C 30207 D 6207 E F G H		
				Teeth number		Module		Teeth number		Module				
				Z 1	Z 2	Z 3	Z 4	M.	Z 1	Z 2	Z 3	Z 4	M.	
				*	18	18		6.15						
	Components material													
	Casing		Shaft X		Shaft Z		Bevel gear		Spur gear					
	ASTM 60-40-18		AISI 3120		AISI 3120		AISI 3120							

REF. -				INDEX	COM. N°
				12	009.811
RATIO	FIG. MONT.	COD.LETT.	T-27J	CODE	
1 : 1	5 - 6	COD.NUM.	267	9.267.806.10	



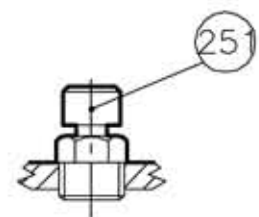
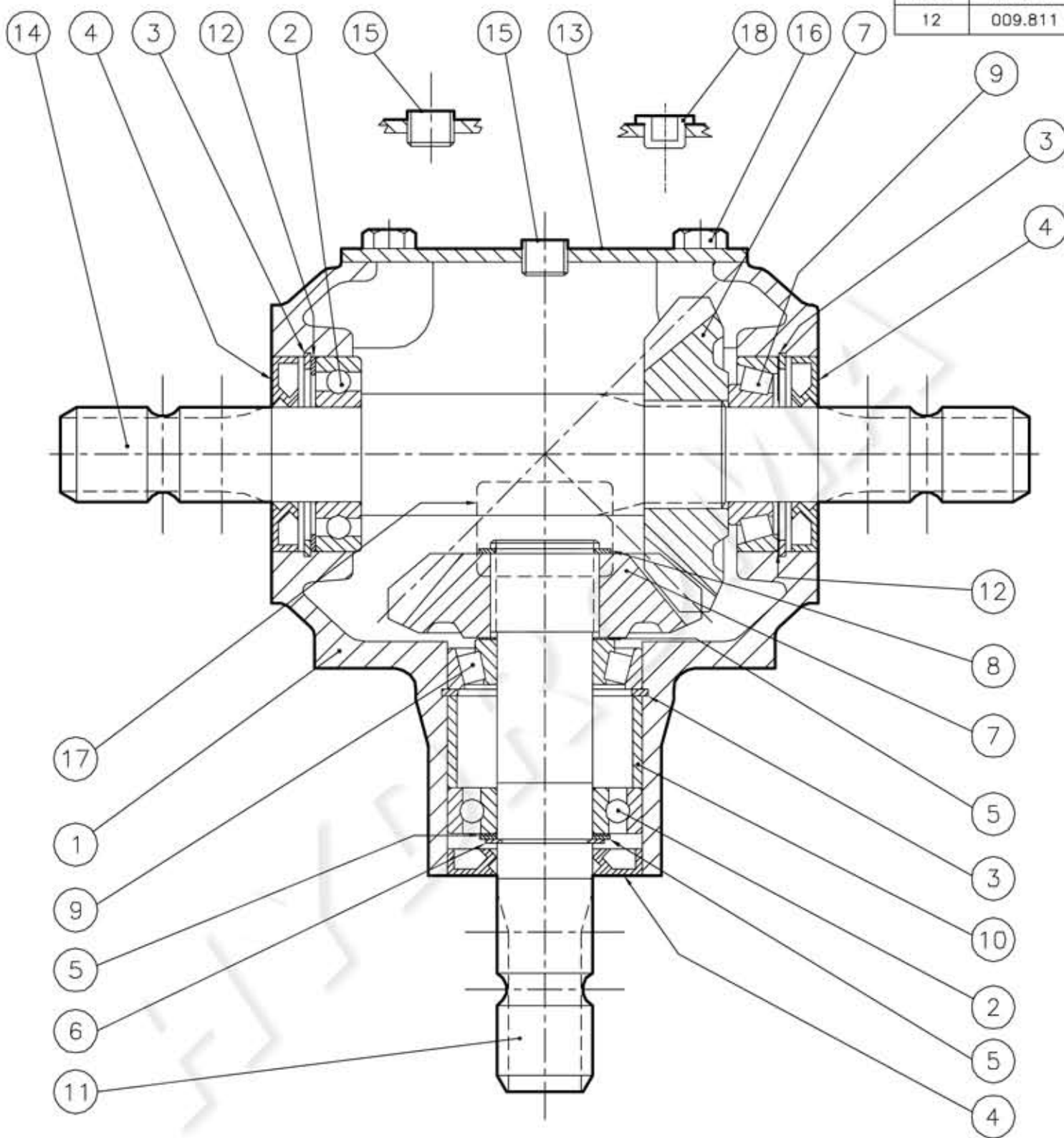
NOTE DI MONTAGGIO	ASSEMBLY NOTES	
<ul style="list-style-type: none"> <li>- GIOCO DI INGRANAMENTO .</li> <li>- PRECARICO ASSE USCITA (SENZA PARAOLIO) .</li> <li>- PRECARICO ASSE ENTRATA (SENZA PARAOLIO) .</li> <li>- SERRAGGIO VITI COPERCHIO .</li> <li>- APPLICARE SILICONE TRA COPERCHIO E SCATOLA .</li> <li>- NEBULIZZARE ALL'INTERNO DELLA SCATOLA CON "NUCLEOIL 10" COME ULTIMA OPERAZIONE .</li> <li>- PARTICOLARI SMONTATI .</li> <li>- INGRASSARE I PARAOLI TRA LABBRO DI TENUTA E LABBRO PARAPOLVERE .</li> </ul>	<ul style="list-style-type: none"> <li>- GEARS BACKLASH .</li> <li>- OUTPUT SHAFT BEARINGS PRELOAD (WHITOUT OIL SEAL) .</li> <li>- INPUT SHAFT BEARINGS PRELOAD (WHITOUT OIL SEAL) .</li> <li>- TIGHTENING COVER BOLTS .</li> <li>- APPLY SILICONE SEALANT BETWEEN COVER AND HOUSING .</li> <li>- SPRAY "NUCLEOIL 10" INSIDE THE HOUSING AS LAST OPERATION .</li> <li>- NOT ASSEMBLED PARTS .</li> <li>- GREASE THE OIL SEALS BETWEEN SEAL LIPS AND LIPS COVER .</li> </ul>	<p>0.18 ÷ 0.49 mm. 1 ÷ 5 Kgcm. 2.5 ÷ 5 Kgcm. 5 ÷ 6.4 Kgm.</p> <p>A.253.001</p>

SPESS. TEORICA IN: (A) 0.7 mm  
THEORETICAL SHIMS: (B) 0.55 mm

(C) 0.65 mm  
(D) 2 mm

REF.	DESIGNATION	T-27J
DATE	CODE	9.267.806.10
16/MAR/04		

INDEX	COM. N°
12	009.811



REF.	INDEX	COM. N°
	12	009.811
RATIO	FIG. MONT.	COD.LETT.
1 : 1	5 - 6	T-27J
	COD.NUM.	267
		CODE
		9.267.806.10

POS.	DRG. Nr.	PCS.	DESCRIPTION
1	0.267.0304.00	1	CASTING & MACHINING
2	8.0.1.00870	2	BALL BEARING 6207 (35x72x17)
3	8.5.2.00131	3	SNAP RING (72x75x2.5 , FOR HOLES)
4	8.7.1.00152	3	DUST LIP (35x72x10)
5	0.259.7500.00	2	SHIM KIT (35.3x48.0)
6	8.5.1.00005	1	SNAP RING (35x33x1.5 , FOR SHAFTS)
7	0.267.5007.00	2	GEAR CROWN Z18 M6.15
8	8.5.1.00029	1	SNAP RING (40x37.5x1.75 , FOR SHAFTS)
9	8.0.9.00026	2	ROLLER BEARING 30207 (35x72x18.25)
10	0.267.7100.00	1	SPACER (64.3x71.8x34.1)
11	0.267.2001.00	1	INPUT SHAFT 1"3/8 Z6
12	0.248.7500.00	2	SHIM KIT (60.3x71.7)
13	0.267.1300.00	1	COVER
14	0.267.3005.00	1	THROUGH OUTPUT SHAFT 1"3/8 Z6
15	8.6.6.00201	4	3/8" GAS CONICAL PLUG WITH EMBEDDED HEXAGON
16	8.1.1.00054	4	BOLT M10x20 HHB (8,8)
17	0.124.7135.00	1	NAME PLATE
18	8.6.0.01684	1	3/8" GAS SUB PLUG

**(A.253.001) SHIPPED SEPARATELY**

POS.	DRG. Nr.	PCS.	DESCRIPTION
251	8.6.7.00161	1	3/8" GAS OIL VENT PLUG