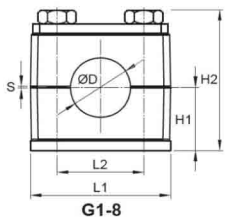


Part number:

HYDROMA
HYDRAULICKÉ SYSTÉMY**HIDROMA**
SYSTEMS
UKŁADY HYDRAULICZNE**HYDROMA**
ГИДРАВЛИЧЕСКИЕ СИСТЕМЫ

Handles single DIN 3015

Kategoria : **Brackets for pipes and hydraulic lines****Handle material:** polypropylene.**Clamps color:** green.**Operating temperature:** -30°C up to +90°C.**Material of the top plate:** carbon steel galvanized.**Material of the bottom plate:** phosphated carbon steel.**Fixing screws:** carbon steel zinc plated, hex head bolts.**Application:** handles are used for fast and permanent fixing of pipes, hoses and cables in many industries. Implementation is in accordance with DIN 3015.

Article nr	Group	D mm	D cal	L1 mm	L2 mm	H1 mm	H2 mm	S mm
CM40M11P1YG1006,0	G1	6	-	36	20	16,5	37	0,4
CM40M11P1YG1006,4	G1	6,4	1/4	36	20	16,5	37	0,4
CM40M11P1YG1008,0	G1	8	5/16	36	20	16,5	37	0,4
CM40M11P1YG1009,5	G1	9,5	3/8	36	20	16,5	37	0,4
CM40M11P1YG1010,0	G1	10	-	36	20	16,5	37	0,4
CM40M11P1YG1012,0	G1	12	-	36	20	16,5	37	0,4
CM40M11P1YG2012,7	G2	12,7	1/2	42	26	19,5	43	0,6
CM40M11P1YG2013,5	G2	13,5	-	42	26	19,5	43	0,6
CM40M11P1YG2014,0	G2	14	-	42	26	19,5	43	0,6
CM40M11P1YG2015,0	G2	15	-	42	26	19,5	43	0,6
CM40M11P1YG2016,0	G2	16	5/8	42	26	19,5	43	0,6
CM40M11P1YG2017,2	G2	17,2	-	42	26	19,5	43	0,6
CM40M11P1YG2018,0	G2	18	-	42	26	19,5	43	0,6
CM40M11P1YG3019,0	G3	19	3/4	50	33	21	46	0,6
CM40M11P1YG3020,0	G3	20	-	50	33	21	46	0,6
CM40M11P1YG3021,3	G3	21,3	-	50	33	21	46	0,6
CM40M11P1YG3022,0	G3	22	7/8	50	33	21	46	0,6
CM40M11P1YG3023,0	G3	23	-	50	33	21	46	0,6
CM40M11P1YG3025,0	G3	25	-	50	33	21	46	0,6
CM40M11P1YG3025,4	G3	25,4	1	50	33	21	46	0,6
CM40M11P1YG4026,9	G4	26,9	-	60	40	24	52	0,6
CM40M11P1YG4028,0	G4	28	-	60	40	24	52	0,6
CM40M11P1YG4030,0	G4	30	-	60	40	24	52	0,6

Article nr	Group	D mm	D cal	L1 mm	L2 mm	H1 mm	H2 mm	S mm
CM40M11P1YG5032,0	G5	32	1 1/4	71	52	32	68	0,8
CM40M11P1YG5033,7	G5	33,7	-	71	52	32	68	0,8
CM40M11P1YG5035,0	G5	35	-	71	52	32	68	0,8
CM40M11P1YG5038,0	G5	38	1 1/2	71	52	32	68	0,8
CM40M11P1YG5040,0	G5	40	-	71	52	32	68	0,8
CM40M11P1YG5042,0	G5	42	-	71	52	32	68	0,8
CM40M11P1YG6044,5	G6	44,5	1 3/4	88	66	36	76	0,8
CM40M11P1YG6048,3	G6	48,3	-	88	66	36	76	0,8
CM40M11P1YG6050,8	G6	50,8	2	88	66	36	76	0,8
CM40M11P1YG7057,2	G7	57,2	2 1/4	122	94	51,5	107	0,8
CM40M11P1YG7060,3	G7	60,3	-	122	94	51,5	107	0,8
CM40M11P1YG7063,5	G7	63,5	2 1/2	122	94	51,5	107	0,8
CM40M11P1YG7070,0	G7	70	2 3/4	122	94	51,5	107	0,8
CM40M11P1YG7073,0	G7	73	-	122	94	51,5	107	0,8
CM40M11P1YG7076,1	G7	76,1	3	122	94	51,5	107	0,8
CM40M11P1YG8088,9	G8	88,9	3 1/2	148	120	64	132	0,8
CM40M11P1YG8101,6	G8	101,6	4	148	120	64	132	0,8