

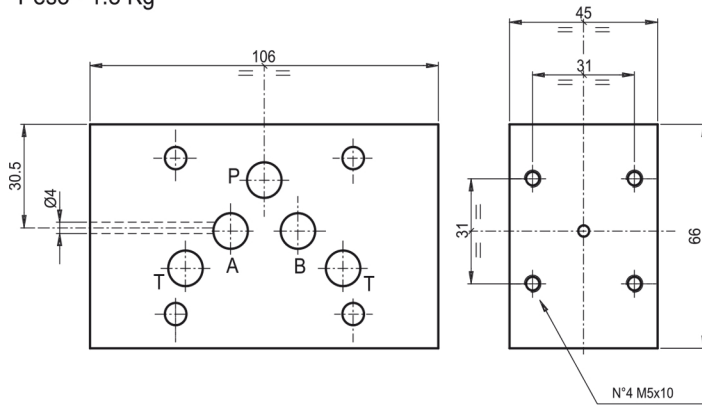
Part number:

Packing plates CETOP5 for pressure switches type EB6...5

Base di collegamento CETOP 5 con attacco pressostato

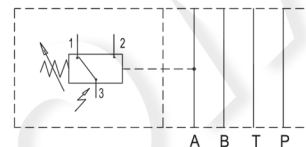
Weight = 1.8 Kg

Peso= 1.8 Kg



Type Tipo	Ports Utilizzi
0	A e B
1	A
2	B
3	Side Lato B P e T Side Lato A
4	Side Lato B P
5	T Side Lato A
6	P e P

Hydraulic symbol / schema idraulico
type / tipo EB615



Ordering code:

Esempio di ordinazione: **EB6** * **5**

EUROFLUID

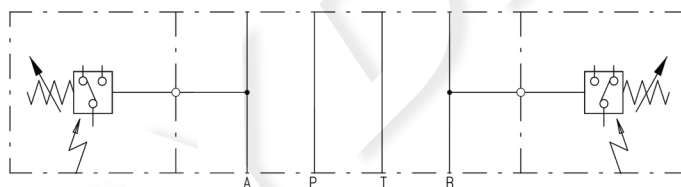
Module for use
with pressure switches = B6

Base di collegamento
per attacco pressostato =

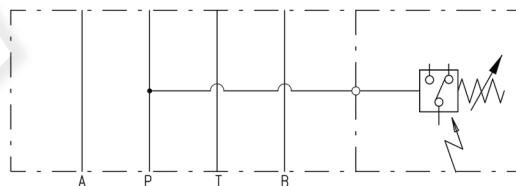
CETOP 5

0-1-.....6

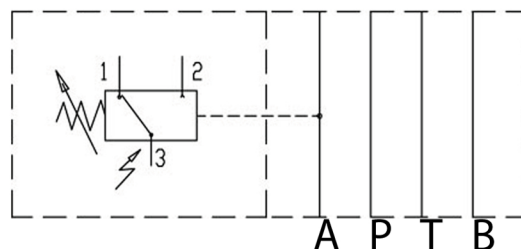
= See list / Vedere tabella



EB605



EB645



EB615