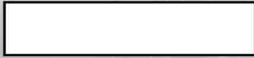


Part number:



HYDROMA

HYDRAULICKÉ SYSTÉMY

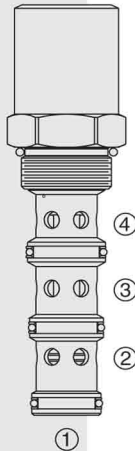
HIDROMA
SYSTEMS

UKŁADY HYDRAULICZNE

HYDROMA

ГИДРАВЛИЧЕСКИЕ СИСТЕМЫ

EC16-42 Pressure Compensator, Priority-On-Demand,



DESCRIPTION

A screw-in, cartridge-style, priority on-demand, pressure-compensator with static load sense. It is intended to provide priority flow in the required amount while allowing excess flow to be used for auxiliary functions.

OPERATION

The EC16-42 is a priority-type valve delivering pump flow at port 3. Port 4 will deliver required priority flow regardless of load pressure. Excess flow exits at port 2. Port 1 is the load sense port. All ports may be fully pressurized.

FEATURES

- Priority-on-demand.
- Static load sense.
- Hardened parts for long life.
- Quiet, modulated response.
- Industry common cavity.

RATINGS

Maximum Operating Pressure: 240 bar (3500 psi)

Input Flow: 150 lpm (40 gpm) with 10.3 bar (150 psi) compensating spring; 115 lpm (30 gpm) with 5.5 bar (80 psi) compensating spring.

Maximum Priority Flow Rate: 80% of maximum input flow when priority pressure exceeds bypass pressure. 50% of maximum input flow when bypass pressure exceeds priority pressure.

Temperature: -40 to 100°C (-40 to 212°F) with Buna N seals;
-26 to 204°C (-15 to 400°F) with fluorocarbon seals.

Fluids: Mineral-based or synthetics with lubricating properties at viscosities of 7.4 to 420 cSt (50 to 2000 sus); See Temperature and Oil Viscosity,

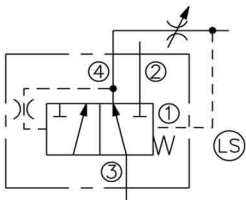
Installation: No restrictions;

Cavity: VC16-4;

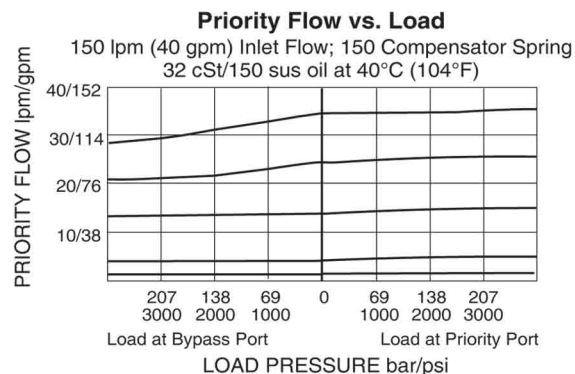
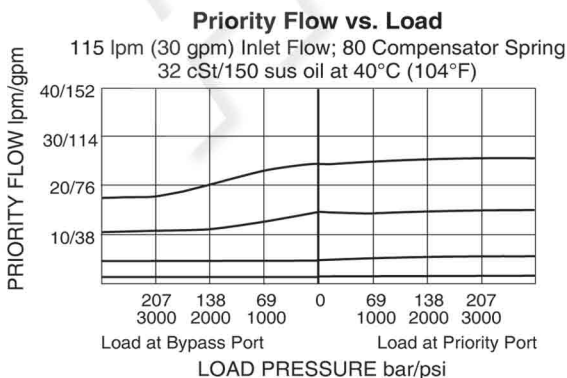
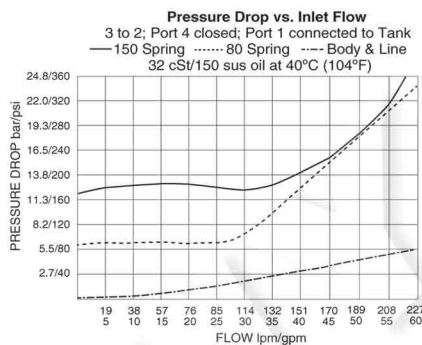
Cavity Tool: CT16-4XX;

Seal Kit: SK16-4X-MMM;

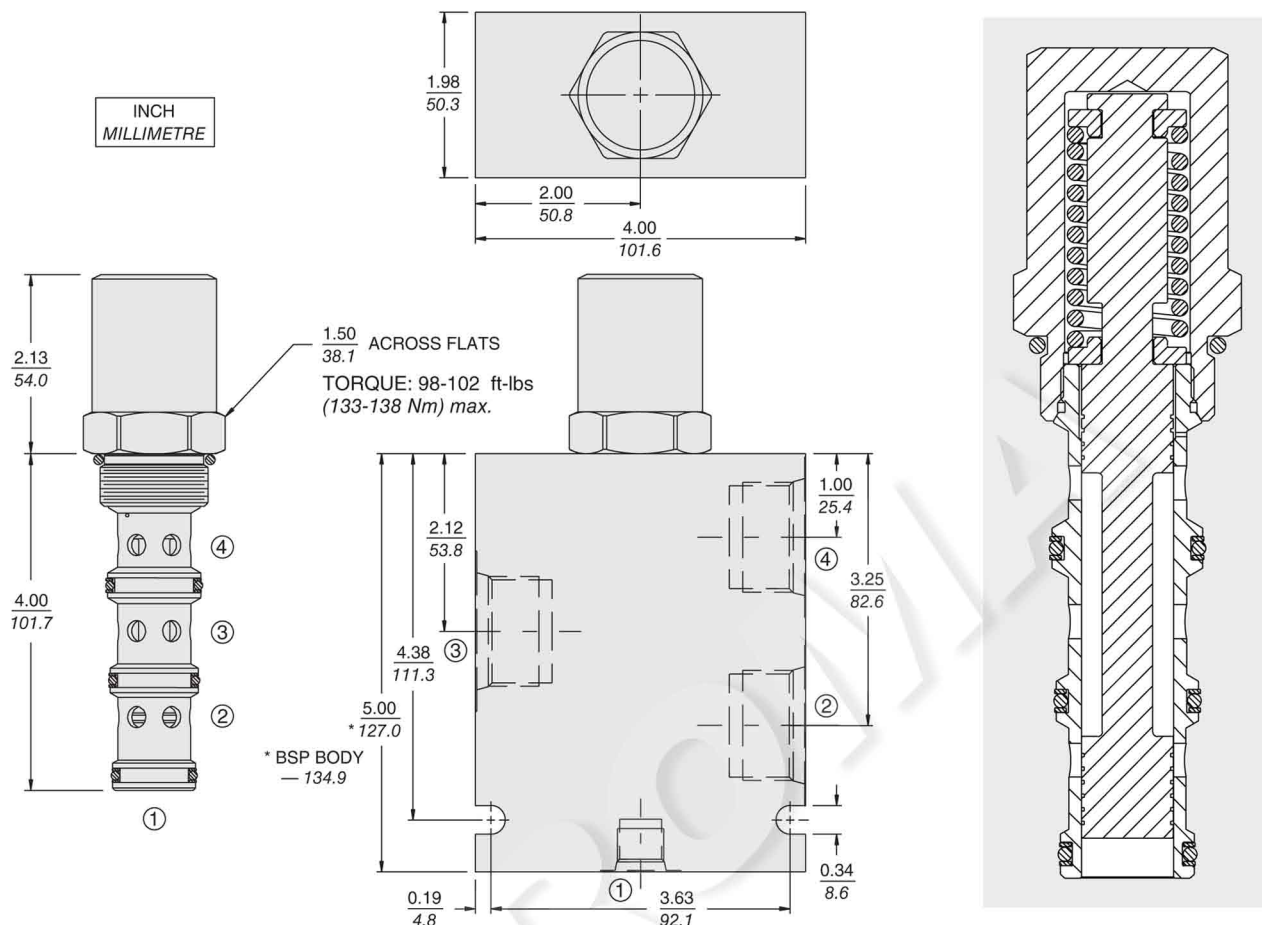
ISO SYMBOL



PERFORMANCE (Cartridge Only)



DIMENSIONS



MATERIALS

Cartridge: Weight: 0.56 kg. (1.23 lb)
Steel with hardened work surfaces.
Zinc-plated exposed surfaces.
Buna N seals standard.

Standard Ported Body: Weight:
1.50 kg. (3.30 lb); Anodized high-strength aluminum alloy, rated to 207 bar (3000 psi). BSP and ductile iron bodies available; dimensions may differ.

TO ORDER

EC16-42 - - -

Porting

Cartridge Only **0**
3/4" BSP* **6B**
1" BSP* **8B**
SAE 12; Port 1: SAE 6 **12T**
SAE 16; Port 1: SAE 6 **16T**

Note: Dimension of housing differs for BSP body.

Compensator Spring

80 5.51 bar (80 psid)
150 10.34 bar (150 psid)

Seals

N Buna N (Std.)
V Fluorocarbon