

Part number:

009-10200a

HYDROMA

HYDRAULICKÉ SYSTÉMY

HIDROMA
SISTEMS

UKŁADY HYDRAULICZNE

HYDROMA

ГИДРАВЛИЧЕСКИЕ СИСТЕМЫ

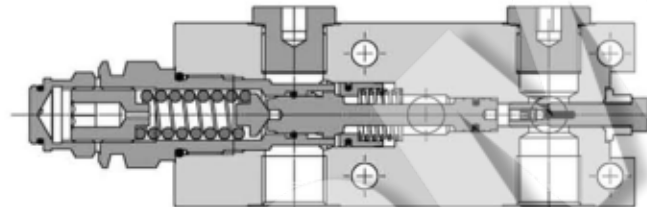
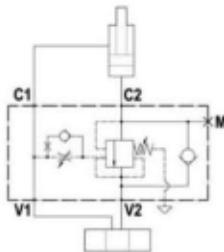
Tipo / Type

FPOB-150-S-*. *-2F-P-35-AP-*. *

Sez./Section

P

Valvola overcenter singola bilanciata, montaggio con C1, C2 flangiate e pilotaggio interno e regolabile
Fully balanced single overcenter valve, gasket mounted: C1-C2 flanged, internal and adjustable pilot



SPECIFICHE TECNICHE

Materiali: corpo in acciaio, protetto mediante zincatura. I componenti interni sono in acciaio trattato termicamente.

Portata: fino a 150 l/min

Taratura max.: 350 bar

Rapporto di pilotaggio: 4 : 1 (a richiesta 8 : 1)

Regolazione pressione: mediante vite

Campo di regolazione pressione: veder pag. 02

TECHNICAL SPECIFICATIONS

Materials: body is steel made. Internal parts are in hardened steel. External surface: zinc plated.

Rated flow: up to 150 l/min

Max. setting: 350 bar

Pilot ratio: 4 : 1 (standard), 8 to 1 on request

Adjustment means: leakproof screw adjustment

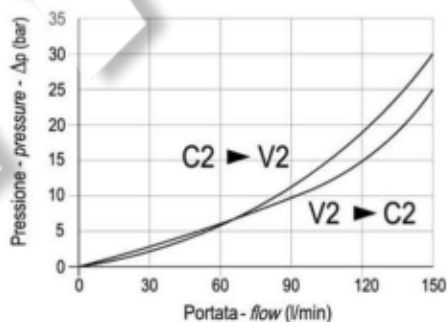
Adjustable pressure range: see page 02

DIAGRAMMA PERDITE DI CARICO - PRESSURE DROP CURVES

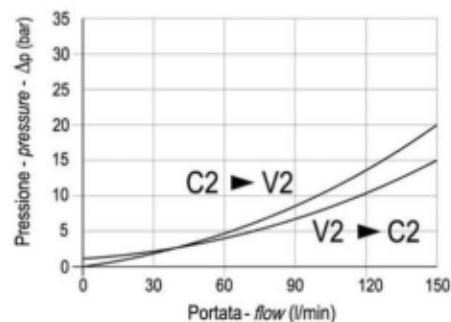
Viscosità olio 24 mm²/sec. (3,5 °E)
Temperatura 50 °C

Oil viscosity 24 mm²/sec. (3,5 °E)
Temperature 50 °C

1/2"BSPP



3/4"BSPP



Part number:

009-10200b

HYDROMA

HYDRAULICKÉ SYSTÉMY

**HIDROMA
SISTEMS**

UKŁADY HYDRAULICZNE

HYDROMA

ГИДРАВЛИЧЕСКИЕ СИСТЕМЫ

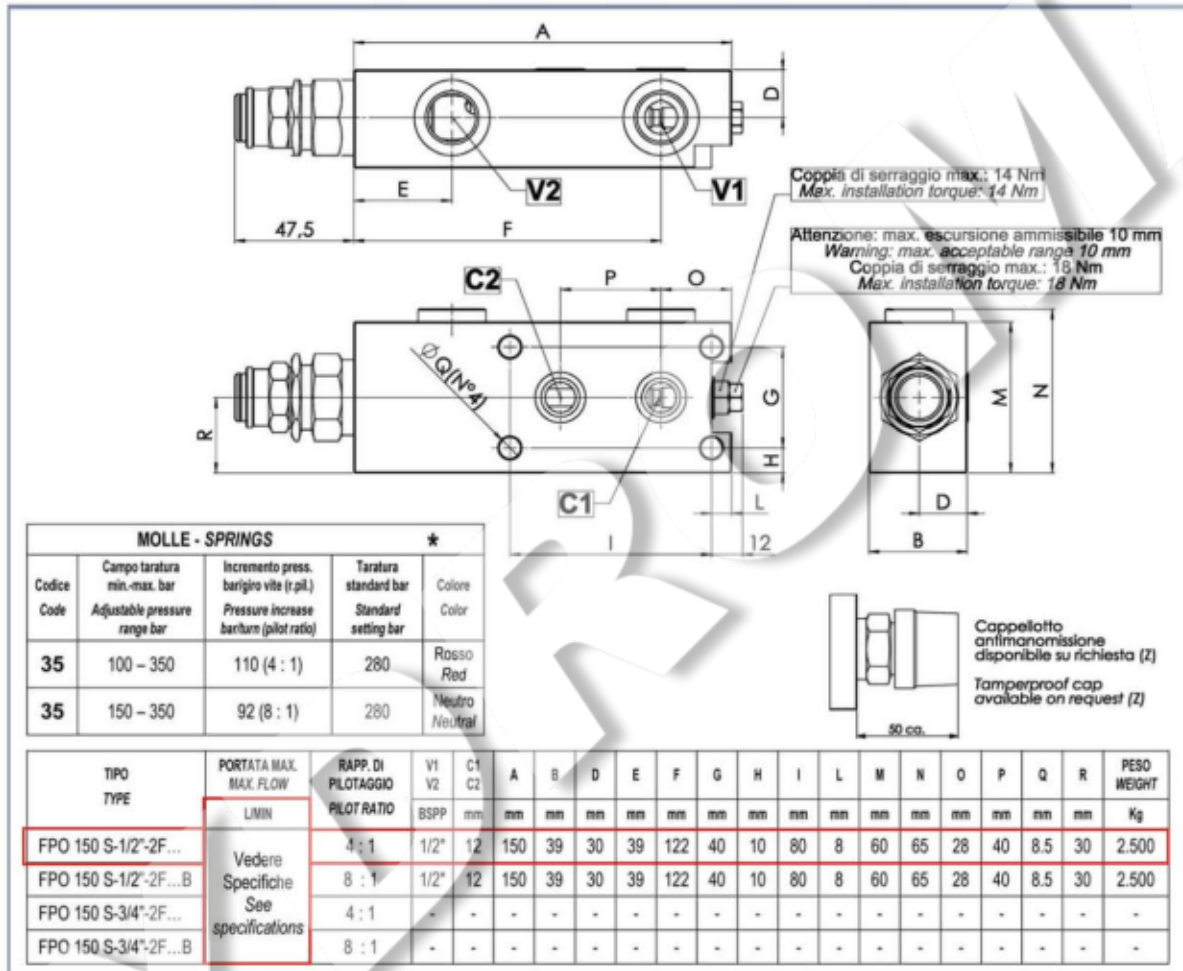
Tipo / Type

FPOB-150-S-*. *-2F-P-35-AP-*. *

Sez./Section

P

Valvola overcenter singola bilanciata, montaggio con C1, C2 flangiate e pilotaggio interno e regolabile
Fully balanced single overcenter valve, gasket mounted: C1-C2 flanged, internal and adjustable pilot



MOLLE - SPRINGS *				
Codice Code	Campo taratura min.-max. bar Adjustable pressure range bar	Incremento press. bar/gio vite (r.pil.) Pressure increase barturn (pilot ratio)	Taratura standard bar Standard setting bar	Colore Color
35	100 - 350	110 (4 : 1)	280	Rosso Red
35	150 - 350	92 (8 : 1)	280	Neutro Neutral

TIPO TYPE	PORTATA MAX. MAX. FLOW L/MIN	RAPP. DI PILOTAGGIO PILOT RATIO	V1 V2 BSPP	C1 C2 mm	A	B	D	E	F	G	H	I	L	M	N	O	P	Q	R	PESO WEIGHT Kg
					mm	mm	mm	mm	mm	mm	mm	mm	mm	mm	mm	mm	mm	mm	mm	mm
FPO 150 S-1/2"-2F...	Vedere Specifiche See specifications	4 : 1	1/2"	12	150	39	30	39	122	40	10	80	8	60	65	28	40	8.5	30	2.500
FPO 150 S-1/2"-2F...B		8 : 1	1/2"	12	150	39	30	39	122	40	10	80	8	60	65	28	40	8.5	30	2.500
FPO 150 S-3/4"-2F...		4 : 1	-	-	-	-	-	-	-	-	-	-	-	-	-	-	-	-	-	-
FPO 150 S-3/4"-2F...B		8 : 1	-	-	-	-	-	-	-	-	-	-	-	-	-	-	-	-	-	-

ESEMPIO DI ORDINAZIONE - ORDERING CODE EXAMPLE

