

Part number:

009-10209a

**HYDROMA**

HYDRAULICKÉ SYSTÉMY

**HIDROMA  
SYSTEMS**

UKŁADY HYDRAULICZNE

**HYDROMA**

ГИДРАВЛИЧЕСКИЕ СИСТЕМЫ

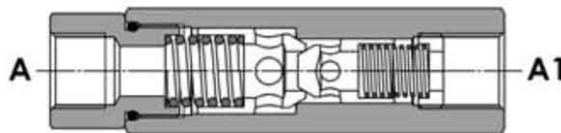
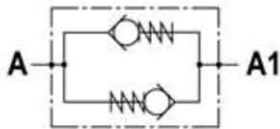
Tipo/Type

**FPR D-\*.\*.\*.\***

Sez./Section

**D**

Valvola a ritegni contrapposti, montaggio in linea  
*Bi-directional in line poppet check valve*



**SPECIFICHE TECNICHE**

**Materiali:** corpo in acciaio, protetto mediante zincatura. I ritegni sono in acciaio trattato termicamente.

**Portata:** fino a 85 l/min

**Pressione max.:** 350 bar

**Pressione di apertura ritegni:** standard A-A1: 0.5 bar, A1-A: 8 bar.

**TECHNICAL SPECIFICATIONS**

**Materials:** body is steel made, zinc plated. The poppets are in hardened steel.

**Rated flow:** up to 85 l/min

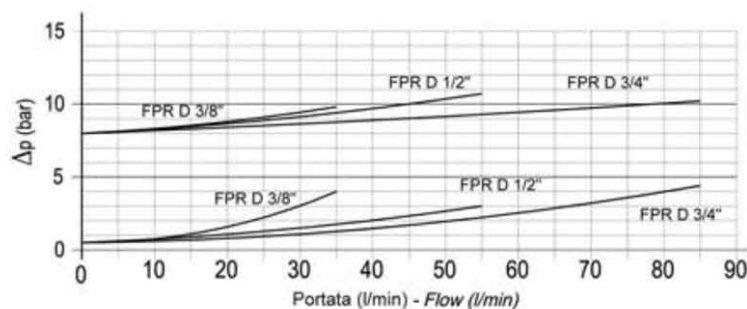
**Max. pressure:** 350 bar

**Cracking pressure:** A-A1: 0.5 bar, A1-A: 8 bar (standard)

**DIAGRAMMA PERDITE DI CARICO - PRESSURE DROP CURVES**

Viscosità olio 24 mm<sup>2</sup>/sec. (3,5 °E)  
Temperatura 50 °C

Oil viscosity 24 mm<sup>2</sup>/sec. (3,5 °E)  
Temperature 50 °C



Part number:

**009-10209b**

**HYDROMA**

HYDRAULICKÉ SYSTÉMY

**HIDROMA  
SYSTEMS**

UKŁADY HYDRAULICZNE

**HYDROMA**

ГИДРАВЛИЧЕСКИЕ СИСТЕМЫ

Tipo/Type

**FPR D-\*\*-\*\*-\*\***

Sez./Section

**D**

Valvola a ritegni contrapposti, montaggio in linea  
Bi-directional in line poppet check valve



TIPO TYPE	PORTATA MAX. MAX. FLOW	PRESSIONE MAX. MAX. PRESSURE	B	C	D	Ch1	Ch2	Peso Weight
	l/min	bar	mm	mm	BSP	mm	mm	Kg
FPR D 3/8"	35	350	99	11	3/8"	27	30	0,455
FPR D 1/2"	55	350	127	21	1/2"	30	32	0,592
FPR D 3/4"	85	350	135,5	14	3/4"	42	46	1,426

**ESEMPIO DI ORDINAZIONE – ORDERING CODE EXAMPLE**

