

Part number:

HYDROMA

HYDRAULICKÉ SYSTÉMY

HIDROMA
SISTEMS

UKŁADY HYDRAULICZNE

HYDROMA

ГИДРАВЛИЧЕСКИЕ СИСТЕМЫ

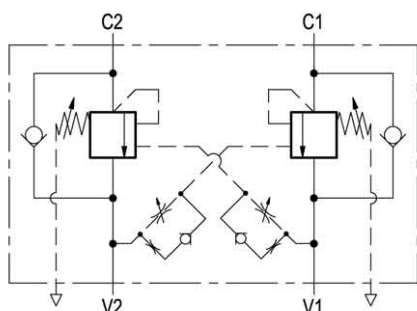
RE 18307-70/08.10

Replaces: RE00171/02.07

Dual counterbalance, vented

A-VBSO-DE-CCAP-33

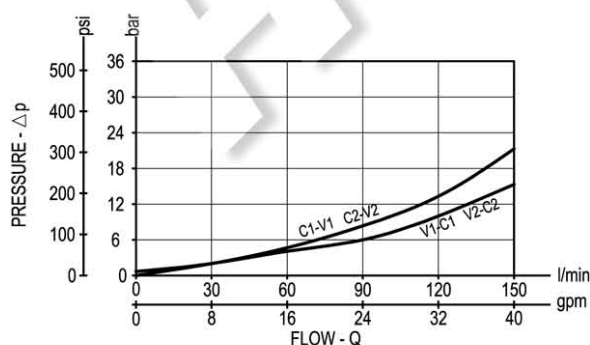
08.44.94 - X - Y - Z



Description

It provides static and dynamic control of load by regulating the flow IN and OUT of the actuator, through ports C1 and C2. This valve module includes 2 sections, each one composed by a check and a relief valve pilot assisted by pressure in the opposite line: the check section allows free flow into the actuator, then holds the load against reverse movement; with pilot pressure applied at the line across, the pressure setting of the relief is reduced in proportion to the stated ratio until opening and allowing controlled reverse flow. The relief spring chambers are vented to air: relief and piloted opening are independent of back-pressure at V1 or V2.

Performance



Technical data

Hydraulic

Max. operating pressure bar (psi) 350 (5000)

Max. flow l/min (gpm) 150 (40)

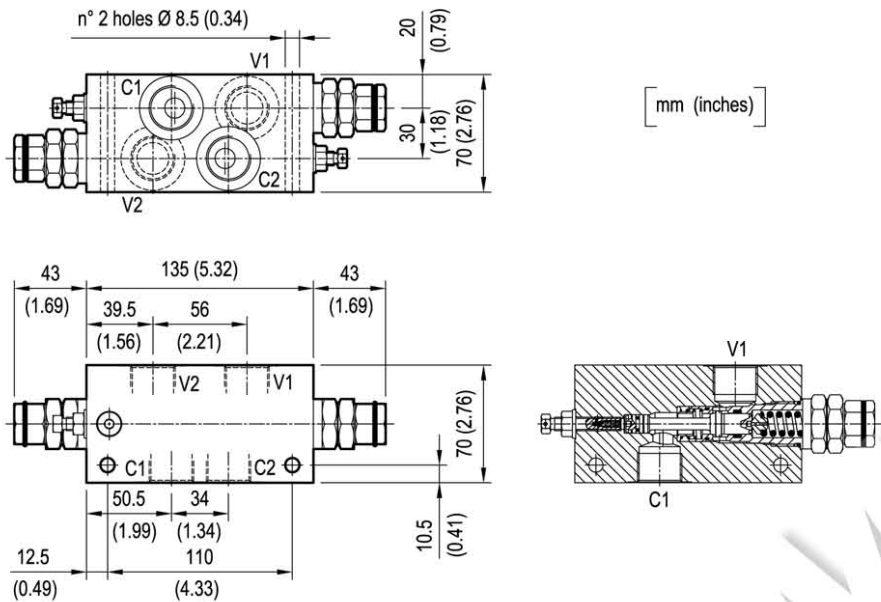
Relief setting: at least 1.3 times the highest expected load.

General

Manifold material	Steel
Weight	kg (lbs) 5.2 (11.4)
Fluid temperature range	°C (°F) between -30 (-22) and +100 (212)
Other technical data	see data sheet RE 18350-50

Note: for applications outside these parameters, please consult us.

Dimensions



Ordering code

08.44.94				X	Y	Z
Dual counterbalance, vented						
Pilot ratio						
= 03 4:1						
Port sizes				V1-V2	C1-C2	
= 04				G 3/4	G 3/4	

SPRINGS		
Adj. pressure range bar (psi)	Pres. increase bar/turn (psi/turn)	Std. setting Q=5 (l/min.) bar (psi)
= 35 100-350 (1450-5000)	110 (1595)	350 (5000)

Type	Material number
08449403043500A	R930003466

Type	Material number