

Part number:

006-10279

HYDROMA

HYDRAULICKÉ SYSTÉMY

**HIDROMA
SISTEMS**

UKŁADY HYDRAULICZNE

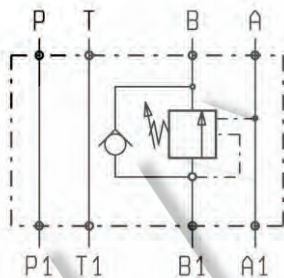
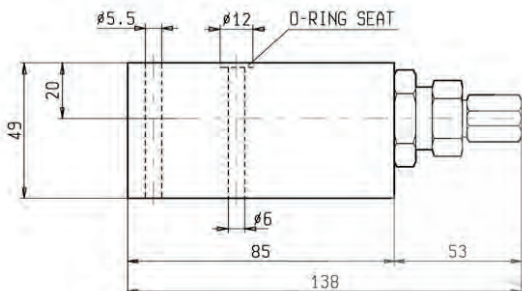
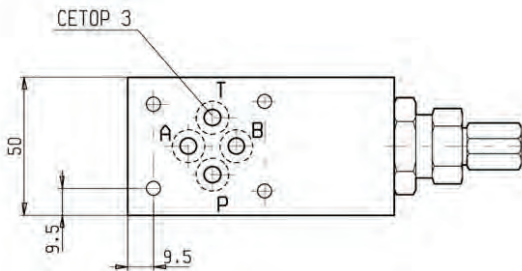
HYDROMA

ГИДРАВЛИЧЕСКИЕ СИСТЕМЫ

**SANDWICH VALVES
SINGLE OVERCENTRE MODULES**

EM-VBSOSEC30-CETOP 3

OP.20.01.03.29 - Z



DESCRIPTION - OPERATION

These modules contain one single overcentre valve type VBSO-SEC-30 (see Oil Control catalog) and can be sandwich-mounted on CETOP 3 (size 6) flanges.

FEATURES - RATINGS

Maximum Operating Pressure **250 bar**

Rated Flow **30 l/min**

- Weight : 0.710 Kg
- Fluids - Temperatures - Testing Conditions - Seals : see page 7.01.04
- Internal Leakage : see page 7.01.04
- Filtration : 25 µm nominal or better, see page 7.01.05
- Manifolds in high-strength aluminum for working pressures up to 250 bar.
- Special steel manifolds can be supplied upon request for working pressures up to 350 bar and for fatigue cycle applications with any working pressure.
- **IMPORTANT** : All products shown in this page are not available from stock and not included in our standard price list. Please contact our Sales Department for any information.

SPRINGS

| Z | Adj. press. | Press.Increase | Std. Setting | Ordering code | Colour |
|-----------|-------------|----------------|-----------------|---------------|--------|
| | Range bar | bar / turn | bar (Q=5 l/min) | | |
| 20 | 60-210 | 56 | 200 | 03.51.01.106 | green |
| 35 | 100-350 | 100 | 350 | 03.51.01.114 | yellow |

PRESSURE DROP

