

Part number:

006-10396

HYDROMA

HYDRAULICKÉ SYSTÉMY

**HIDROMA
SYSTEMS**

UKŁADY HYDRAULICZNE

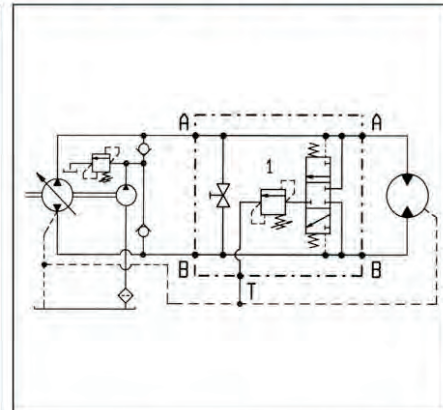
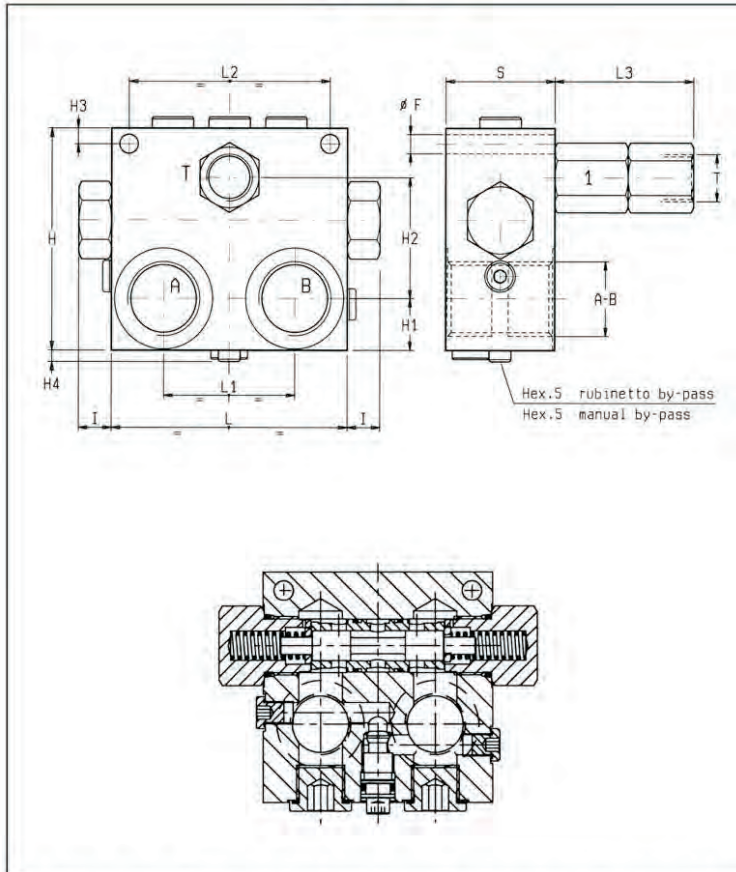
HYDROMA

ГИДРАВЛИЧЕСКИЕ СИСТЕМЫ

**SCAMBIO PER TRASMISSIONI IDROSTATICHE
FOR HYDROSTATIC TRANSMISSION PURGE**

A-VSL-R

08.64.05.00 - Y



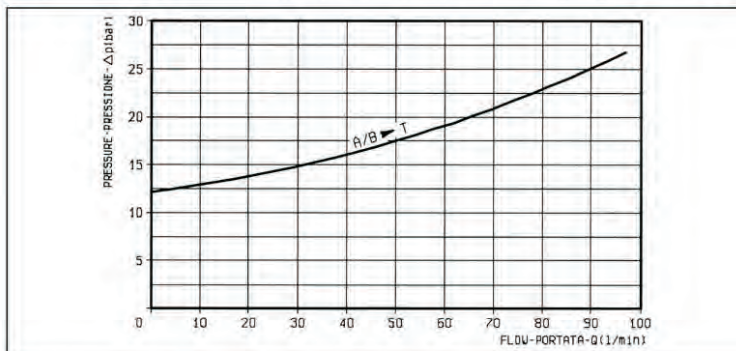
DATI TECNICI / TECHNICAL DATA

Pressione max. 350 bar
Max. working pressure

Portata di scambio vedi diagramma
Flow through shuttle valve and purge relief valve see performance graph

Collettore in acciaio
Steel body

| | | | | | | | | | | | | | | | | | |
|----------|-----------|-----------|-----------|----------|----------|-----------|-----------|-----------|-----------|----------|----------|--|--|--|--|----------|----------------------|
| 50 | 65 | 92 | 60 | 108 | 15 | 12 | 7 | 56 | 24 | 100 | 8.5 | | | | | 1 | 4.00 |
| 66 | 65 | 82 | 50 | 100 | 15 | 12 | 8 | 34 | 34 | 100 | 8.5 | | | | | 3/4 | 3.70 |
| S | L3 | L2 | L1 | L | I | H4 | H3 | H2 | H1 | H | F | | | | | Y | Peso kg Weight kg |



| MOLLE (VALVOLA 1) / SPRINGS (VALVE 1) | | | | |
|---|---|---|-----------------------------------|------------------|
| Campo taratura min - max bar Adj. press. range bar | Incremento press. bar / giro vite Press. increase bar / turn | Taratura standard bar Std. setting bar (crack. pressure) | Cod. ordinazione Ordering code | Colore Colour |
| 5-25 | 6 | 12 | 03.51.01.015 | |
| | | | | |
| | | | | |
| | | | | |

| Y | ATTACCHI / PORT SIZE | |
|-----------|----------------------|-------|
| | A-B | T |
| 04 | G 3/4 | G 1/2 |
| 05 | G 1 | G 1/2 |
| | | |
| | | |