

Part number:

009-10042a

**HYDROMA**

HYDRAULICKÉ SYSTÉMY

**HIDROMA  
SYSTEMS**

UKŁADY HYDRAULICZNE

**HYDROMA**

ГИДРАВЛИЧЕСКИЕ СИСТЕМЫ

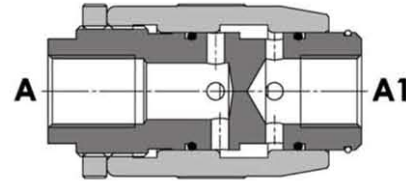
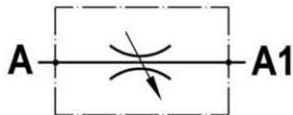
Tipo / Type

**FPMB- \*- \***

Sez / Section

**L**

Valvola regolatrice di flusso bidirezionale, tipo a manicotto  
Needle valve, barrel type



**SPECIFICHE TECNICHE**

**Materiali:** corpo e parti interne in acciaio. La superficie esterna è protetta mediante zincatura.

**Portata max.:** 150 l/min

**Pressione max.:** 350 bar, vedasi tabella a parte

**TECHNICAL SPECIFICATIONS**

**Materials:** body and internal parts are steel made. External surface zinc plated.

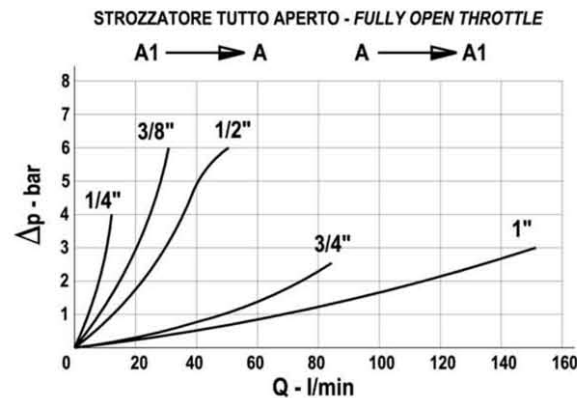
**Rated flow:** 150 l/min

**Max. pressure:** 350 bar, see data sheet

**DIAGRAMMA PERDITE DI CARICO - PRESSURE DROP CURVES**

Viscosità olio 24 mm<sup>2</sup>/sec. (3,5 °E)  
Temperatura 50 °C

Oil viscosity 24 mm<sup>2</sup>/sec. (3,5 °E)  
Temperature 50 °C



Part number:

**009-10042b**

**HYDROMA**

HYDRAULICKÉ SYSTÉMY

**HIDROMA  
SISTEMS**

UKŁADY HYDRAULICZNE

**HYDROMA**

ГИДРАВЛИЧЕСКИЕ СИСТЕМЫ

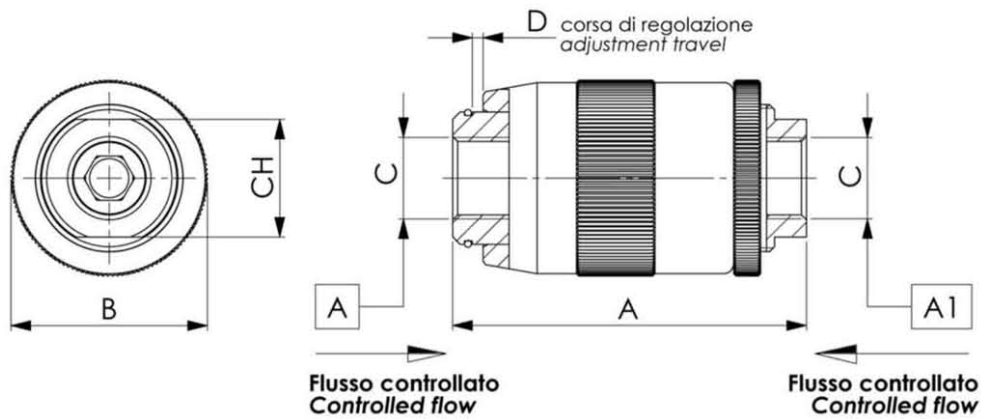
Tipo / Type

**FPMB-\*. \***

Sez / Section

**L**

Valvola regolatrice di flusso bidirezionale, tipo a manicotto  
Needle valve, barrel type



TIPO TYPE	PORTATA MAX. MAX. FLOW	PRESSIONE MAX. MAX. PRESSURE	A	B	C	D	CH	PESO WEIGHT
	l/min	bar	mm	mm	BSPP	mm	mm	Kg
FPMU 1/4	12	350	62	34	1/4"	4.5	19	0.275
<b>FPMU 3/8</b>	<b>30</b>	<b>350</b>	<b>72</b>	<b>40</b>	<b>3/8"</b>	<b>5.5</b>	<b>24</b>	<b>0.430</b>
FPMU 1/2	45	310	80	46	1/2"	7	30	0.630
FPMU 3/4	85	280	100	54	3/4"	10	36	1.050
FPMU 1	150	250	125	65	1"	12	41	1.960

**ESEMPIO DI ORDINAZIONE - ORDERING CODE EXAMPLE**

