

Part number:

009-10053a

HYDROMA

HYDRAULICKÉ SYSTÉMY

**HIDROMA
SYSTEMS**

UKŁADY HYDRAULICZNE

HYDROMA

ГИДРАВЛИЧЕСКИЕ СИСТЕМЫ

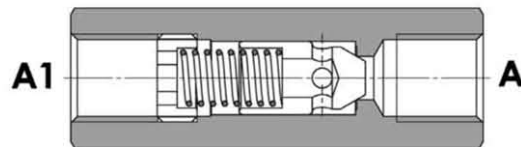
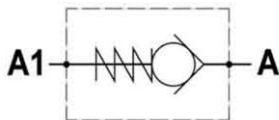
Tipo / Type

FPR-*. *

Sez / Section

D

Valvola di ritegno unidirezionale
Check valve



SPECIFICHE TECNICHE

Materiali: corpo in acciaio. L'otturatore conico guidato è in acciaio trattato termicamente. La superficie esterna è protetta mediante zincatura.

Portata: fino a 310 l/min

Pressione max.: 350 bar, vedasi tabella a parte

Pressione di apertura: standard 0,5 bar, a richiesta 2.5-5-10 bar

TECHNICAL SPECIFICATIONS

Materials: body is steel made. Guided poppet is in hardened steel. External surface is zinc plated.

Rated flow: up to 310 l/min

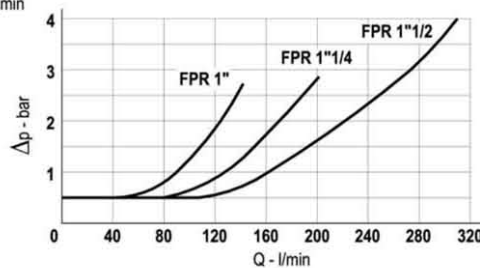
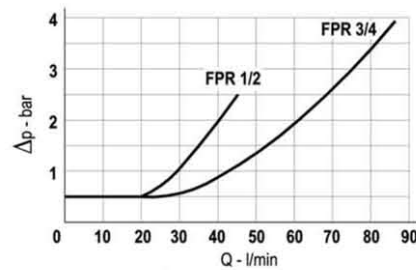
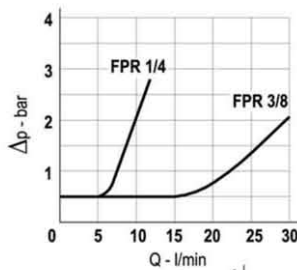
Max. pressure: 350 bar, see data sheet

Cracking pressure: 0,5 bar standard, on request: 2.5-5-10 bar

DIAGRAMMA PERDITE DI CARICO - PRESSURE DROP CURVES

Viscosità olio 24 mm²/sec. (3,5 °E)
Temperatura 50 °C

Oil viscosity 24 mm²/sec. (3,5 °E)
Temperature 50 °C



Part number:

009-10053b

HYDROMA

HYDRAULICKÉ SYSTÉMY

**HIDROMA
SYSTEMS**

UKŁADY HYDRAULICZNE

HYDROMA

ГИДРАВЛИЧЕСКИЕ СИСТЕМЫ

Tipo / Type

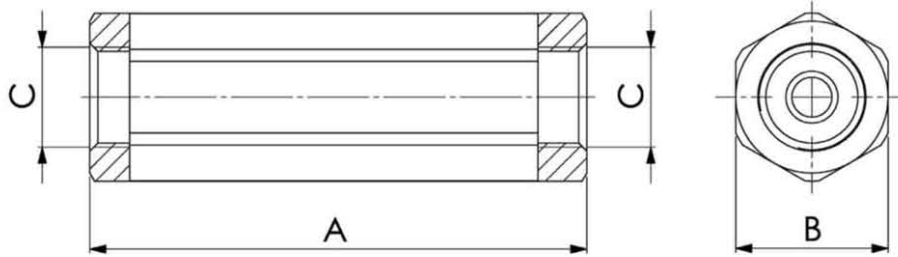
FPR-*.*

Sez./Section

D

Valvola di ritegno unidirezionale

Check valve



| TIPO TYPE | PORTATA MAX. MAX. FLOW | PRESSIONE MAX. MAX. PRESSURE | A | B | C | PESO WEIGHT |
|--------------|---------------------------|---------------------------------|-----|----|-------|----------------|
| | L/MIN | BAR | mm | mm | BSPP | Kg |
| FPR 1/4" | 12 | 350 | 62 | 19 | 1/4" | 0,10 |
| FPR 3/8" | 30 | 350 | 68 | 24 | 3/8" | 0,17 |
| FPR 1/2" | 45 | 320 | 78 | 27 | 1/2" | 0,22 |
| FPR 3/4" | 85 | 300 | 88 | 36 | 3/4" | 0,45 |
| FPR 1" | 140 | 250 | 112 | 46 | 1" | 0,97 |
| FPR 1" 1/4 | 200 | 250 | 145 | 55 | 1"1/4 | 1,68 |
| FPR 1" 1/2 | 310 | 210 | 155 | 60 | 1"1/2 | 2,10 |

ESEMPIO DI ORDINAZIONE – ORDERING CODE EXAMPLE

FPR 1/4 2,5

Codice base
Basic code

Connessioni
Port Sizes

1/4 – 1/4" BSPP
3/8 – 3/8" BSPP
1/2 – 1/2" BSPP
3/4 – 3/4" BSPP
1 – 1" BSPP
1 1/4 – 1 1/4" BSPP
1 1/2 – 1 1/2" BSPP *

Pressione apertura ritegno
Cracking pressure
Omettere se 0,5 bar
Indicare se 2,5 – 5 -10 bar
Omit if 0,5 bar
* Specify if 2,5 – 5 -10 bar