

Part number:

HYDROMA

HYDRAULICKÉ SYSTÉMY

**HIDROMA
SISTEMS**

UKŁADY HYDRAULICZNE

HYDROMA

ГИДРАВЛИЧЕСКИЕ СИСТЕМЫ

TYPE 602

Pressure switch with changeover switch

Width across flats 27
Height without connector 52mm
Thread length 9mm

Without
device connectorWith device
connector 600With non-detachable
device connector 601

	ADJUSTMENT RANGE [bar]	OVERPRESSURE SAFETY	ORDER NUMBER
DIAPHRAGM	0,2 – 2	100 bar	602-2-ABC
	1 – 10		602-10-ABC
	2 – 20	300 bar	602-20-ABC
	5 – 50		602-50-ABC
	10 – 100		602-100-ABC
PISTON	10 – 100	600 bar	602-100-ABC
	20 – 200		602-200-ABC

REPRODUCIBILITY	~ 2-5%	ELECTRICITY MAX.	6 Amp.
HYSTERESIS	~ 20% ; smaller upon request	TYPE OF PROTECTION	IP 65
SWITCHING ELEMENT	Change over contact	PERMISSIBLE TEMP.	-20° to +80° C
SWITCHING FREQUENCY	200/min	WEIGHT	0,12 kg
VOLTAGE	250 Volt		

A Thread

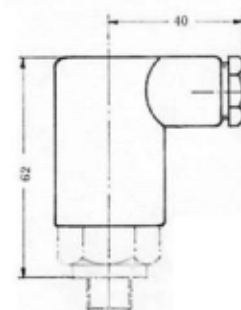
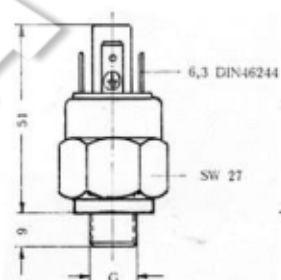
	A	B Sealing element		B	APPLICATION
		DIAPHRAGM			
G 1/8	1	NBR		1	Hydraulic oil, Machine oil, Heating oil, sea water
G 1/4	2	FKM (VITON)		2	Hydraulic fluids, Petrol, Alcohol, Salt and Sulphuric acid
M 10X1 CYLINDRICAL	3	EPDM (APTK)		3	Hydrogen, Brake fluid, Acetylene, etc.
NPT 1/8	4	SILICONE		4	Food, Water etc.
R 1/8 TAPERED	5	PISTON	PISTON SEALING	8	Oil
M 10X1 TAPERED	6		PISTON SEALING	9	Hot water
M 12	7				
M 12X1,5	8				
NPT 1/4	9				

C Body material

	C	D Customized version	D
STEEL GAL ZN 5	1	MICROSWITCH WITH GOLD PLATED CONTACTS	5
VA 1.4305	2	WATERPROOF MICROSWITCH WITH GOLD PLATED CONTACTS	6
BRASS 60	3		
VA 1.4571	8		

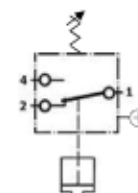
The Open, Close or Change function refers to increasing pressure.

A Kant pressure switch Type 602 has an integrated electric change over switch. When pressure is applied, a diaphragm is deformed or a piston is displaced via a lifting movement. The deformation or movement depends on an adjustable spring preload. When the switching point is reached, the diaphragm or piston has undergone a defined movement which actuates the switch and opens or closes the electrical circuit. Specific pressure values can be monitored via the switching signal.



- Flat connector 6,3 DIN 46244
- Optionally with device connector 600/601: PG9 with strain relief Plug connection 6X60° pivotable

CONNECTION:



→ Order Number Example:
ABCD
602-XX-1260

- Customized version
- Material
- Sealing element
- Thread
- Setting range
- Type