

Part number:

006-10287

HYDROMA

HYDRAULICKÉ SYSTÉMY

**HIDROMA
SISTEMS**

UKŁADY HYDRAULICZNE

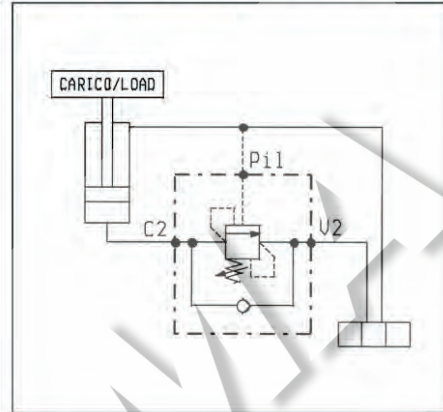
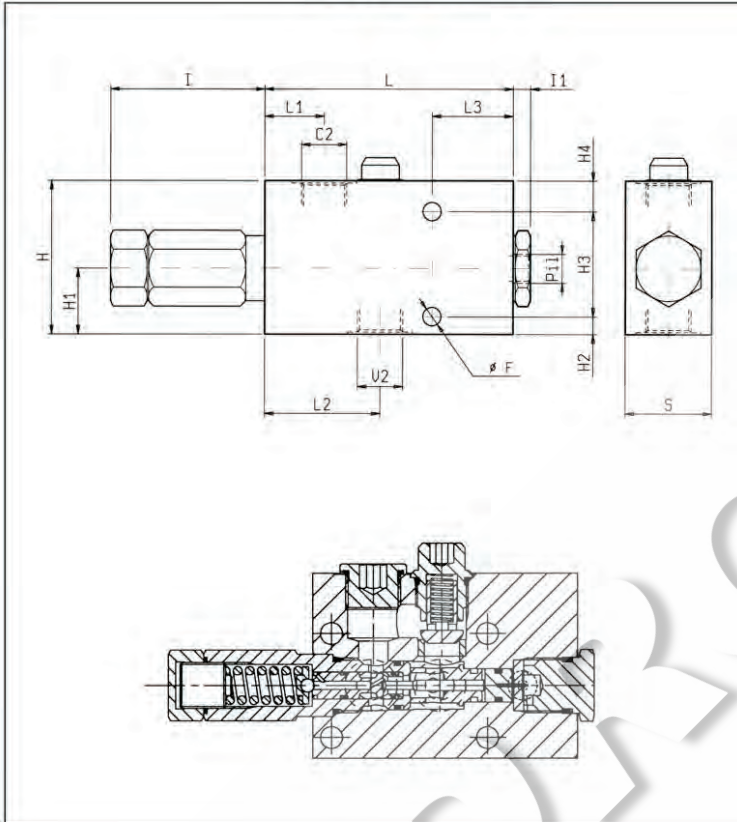
HYDROMA

ГИДРАВЛИЧЕСКИЕ СИСТЕМЫ

**BILANCIAMENTO, SEMPLICE EFFETTO, SERIE "NA"
PILOT ASSISTED, SERIES "NA" OVERCENTRE**

VBSO-SE-NA

05.41.62 - X - Y - Z



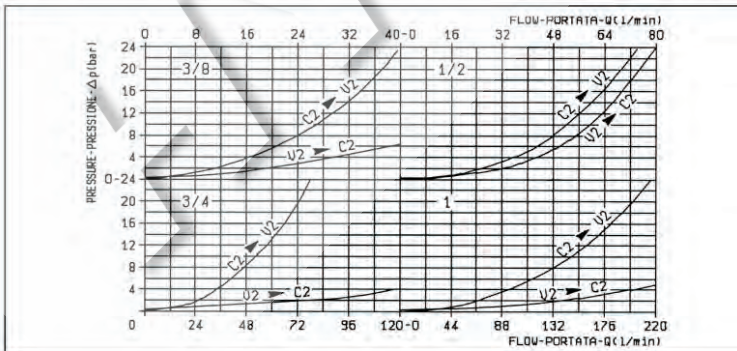
DATI TECNICI / TECHNICAL DATA

Pressione max. 350 bar
Max. pressure

Portata max. vedi diagramma
Flow see performance graph

Taratura della valvola: almeno 1.3 volte superiore alla pressione indotta dal carico
Pressure setting: at least 1.3 times the load induced pressure

| | | | | | | | | | | | | | | | |
|----------|-----------|-----------|-----------|----------|----------|-----------|-----------|-----------|-----------|----------|----------|--|--|----------|---------------------------------------|
| 50 | 40.5 | 77 | 35 | 160 | 92.5 | 35 | 55 | 10 | 35 | 100 | 10.5 | | | 1 | 3.25 |
| 40 | 42.5 | 62 | 29 | 127.5 | 71.5 | 30 | 50 | 10 | 35 | 90 | 10.5 | | | 3/4 | 1.755 |
| 40 | 37.5 | 53.5 | 27.5 | 115 | 71.5 | 14 | 48 | 8 | 30 | 70 | 8.5 | | | 1/2 | 1.39 |
| 35 | 27.5 | 48.5 | 27.5 | 100 | 61 | 17 | 40 | 8 | 26.5 | 65 | 8.5 | | | 3/8 | 0.98 |
| S | L3 | L2 | L1 | L | I | H4 | H3 | H2 | H1 | H | F | | | Y | <small>Press kg Weight kg</small> |



| X | RAPPORTO DI PILOTAGGIO PILOT RATIO |
|-----------|---|
| 03 | 1/2 - 7.6 : 1 |
| | 3/4 - 7.6 : 1 |
| | 1 - 8 : 1 |
| 10 | 3/8 - 3.6 : 1 |
| | 1/2 - 3 : 1 |
| | 3/4 - 3 : 1 |
| | 1 - 2.8 : 1 |

| Z | MOLLE / SPRINGS | | | | |
|----------|---|---|---|-----------------------------------|------------------|
| | Campo taratura min - max bar Adj. press. range bar | Incremento press. bar / giro vite Press. increase bar / turn | Taratura standard bar (Q = 5 l/min) Std. setting bar (Q = 5 l/min) | Cod. ordinazione Ordering code | Colore Colour |
| 3/8 | 20 | 60-210 | 60 | 200 | verde green |
| | 35 | 100-350 | 100 | 350 | giallo yellow |
| 1/2 | 20 | 60-210 | 68 | 200 | verde green |
| 3/4 | 35 | 100-350 | 105 | 350 | giallo yellow |
| 1 | 20 | 60-210 | 36 | 200 | verde green |
| | 35 | 100-350 | 62 | 350 | giallo yellow |

| Y | ATTACCHI / PORT SIZE | |
|-----------|-----------------------------|-------|
| | V2-C2 | PIL |
| 02 | G 3/8 | G 1/4 |
| 03 | G 1/2 | G 1/4 |
| 04 | G 3/4 | G 1/4 |
| 05 | G 1 | G 1/4 |